

FROM THE OFFICE OF

CHARLES O. GEORGI COMPANY

2215 West County Road B

Saint Paul, Minnesota 55113

REGISTERED CIVIL ENGINEER AND LAND SURVEYOR



I Hereby Certify that this plat shows a survey made by me of the property described on this plat, and that the corners are correctly placed as shown, and that all locations have been correctly shown.

7-31-78 the loc GWS

Surveyed For *Ted. Gladys Assoc*

Date *May 1978*

Scale *1" = 20'*

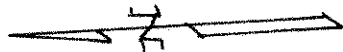
By *Charles O. Georgi*
REGISTERED LAND SURVEYOR

Description:

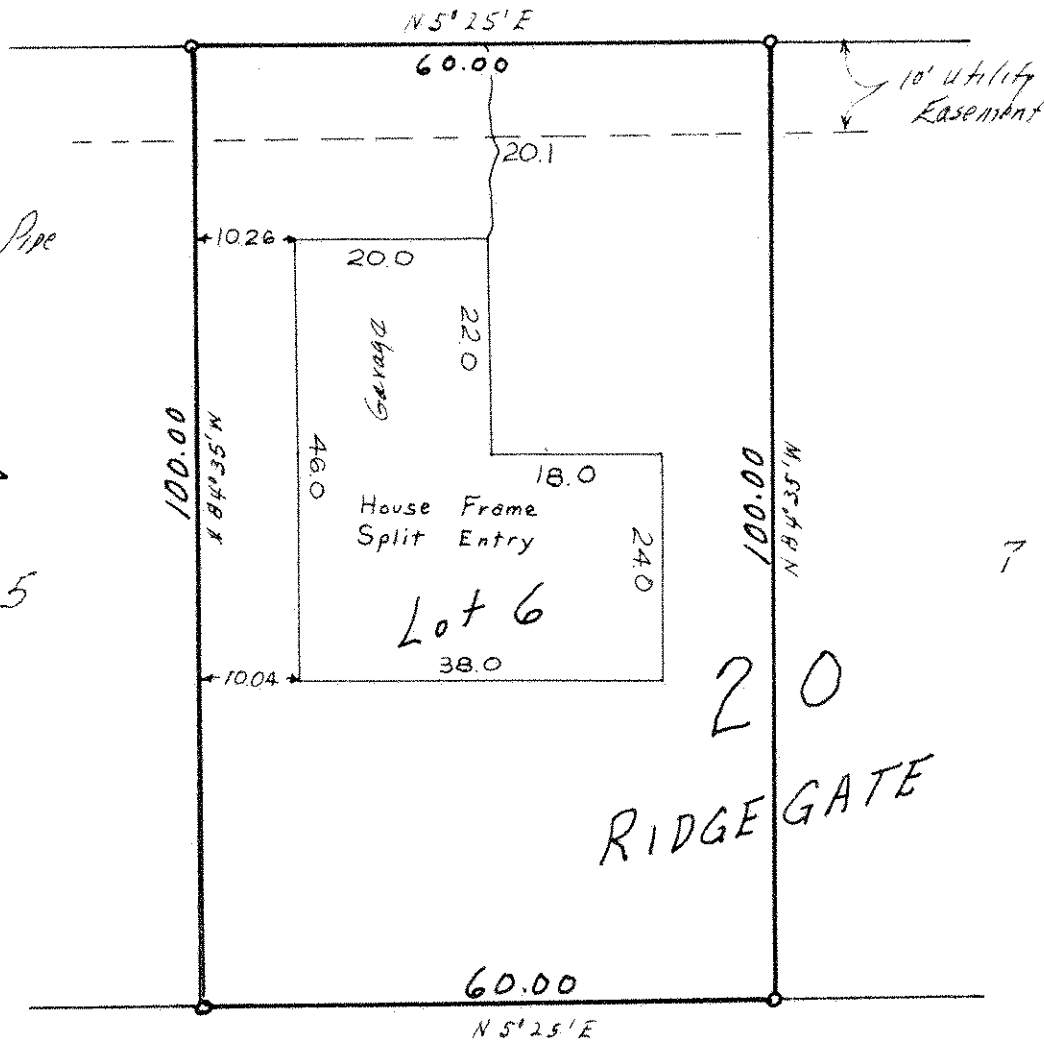
*Lot 6, Block 20
Ridgegate
Washington County, Minn.*

CATSKILL PLAZA.

• Denotes Iron Pipe Monument.



5



*20
RIDGE GATE*

JULY 20 1978