

FROM THE OFFICE OF

CHARLES O. GEORGI COMPANY

2215 West County Road B

Saint Paul, Minnesota 55113

REGISTERED CIVIL ENGINEER AND LAND SURVEYOR

Certificate of Survey

I Heresby Certify that this plat shows a survey made by me of the property described on this plat, and that the corners are correctly placed as shown, and that all locations have been correctly shown. Note: House Location August 1977

Surveyed For Ted Glasrud Associates

Date May, 1977

Scale 1" = 20'

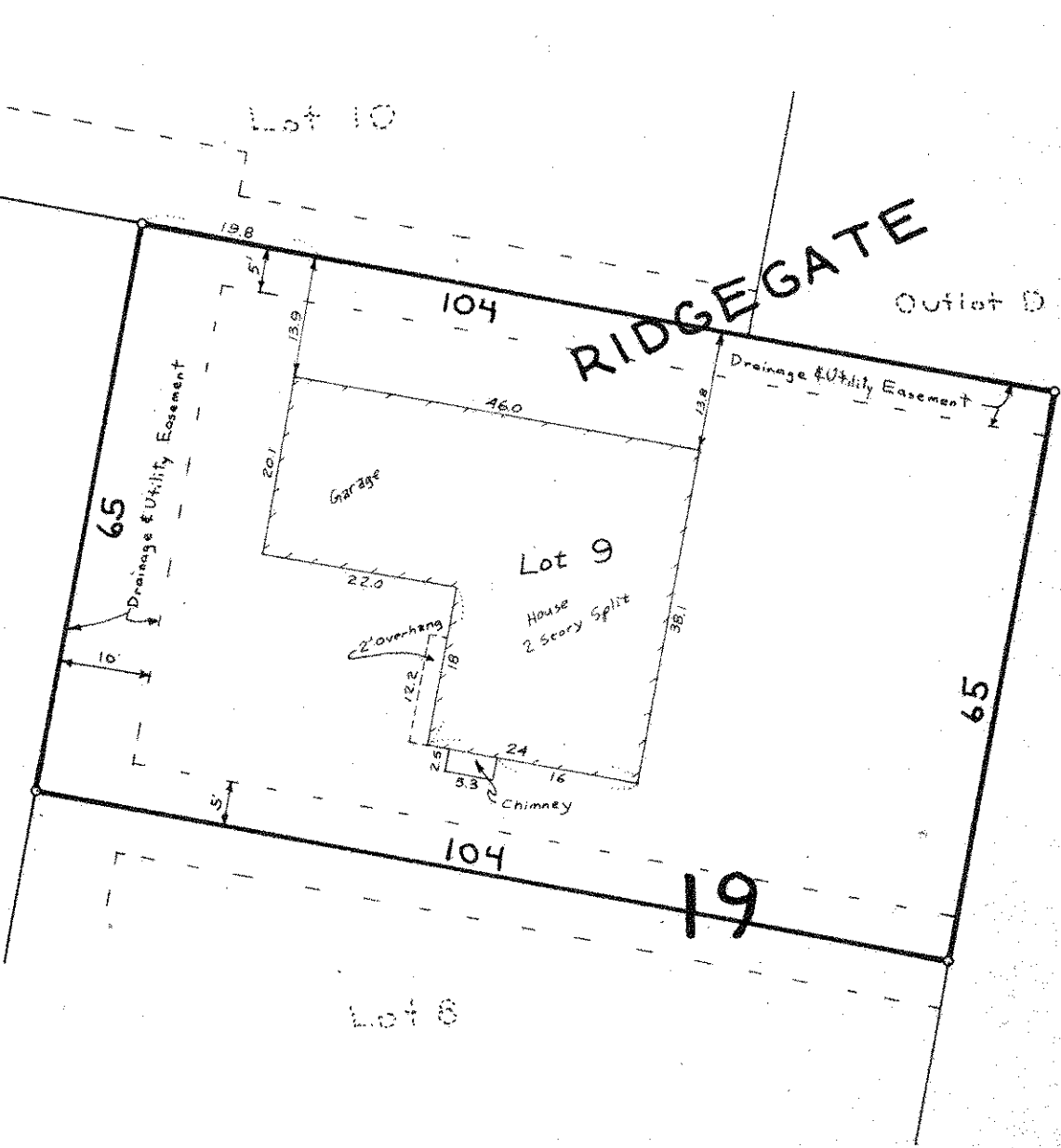
By Charles O. Georgi
REGISTERED LAND SURVEYOR

Description:

Lot 9,
Block 19,
Ridgegate,
Washington County, Minn



CARLSBAD PLAZA



o Denotes Iron Monument
Easements as per plat only