

FROM THE OFFICE OF

**CHARLES O. GEORGI COMPANY**

2215 West County Road B

Saint Paul, Minnesota 55113

REGISTERED CIVIL ENGINEER AND LAND SURVEYOR

**Certificate  
of Survey**

*I Hereby Certify that this plat shows a survey made by me of the property described on this plat, and that the corners are correctly placed as shown, and that all locations have been correctly shown.*

Surveyed For Glasrud Assoc.

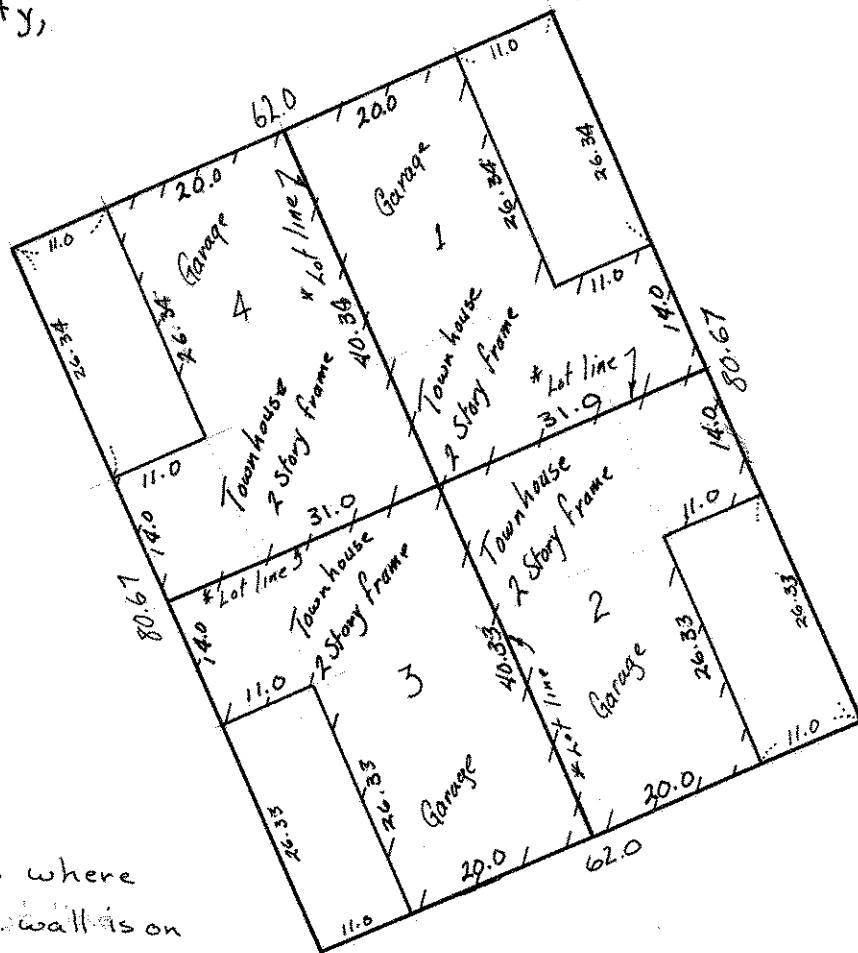
Date May 1978

Scale 1" = 20'

By Donald W. Schmidt  
REGISTERED LAND SURVEYOR

**Description:**

Lots 1, 2, 3 and 4,  
Block 7,  
Ridgegate Third Addition,  
Washington County,  
Minnesota.



\* lot line Denotes where Centerline of End wall is on lot line, and above End, there are two 4" walls seperated by an air space that is on the lot line.

Access by private Drive