

FROM THE OFFICE OF

# CHARLES O. GEORGI COMPANY

2215 West County Road B

Saint Paul, Minnesota 55113

REGISTERED CIVIL ENGINEER AND LAND SURVEYOR

## Certificate of Survey

I Hereby Certify that this plat shows a survey made by me of the property described on this plat, and that the corners are correctly placed as shown, and that all locations have been correctly shown.

Surveyed For *Ted Glasrud Assoc*

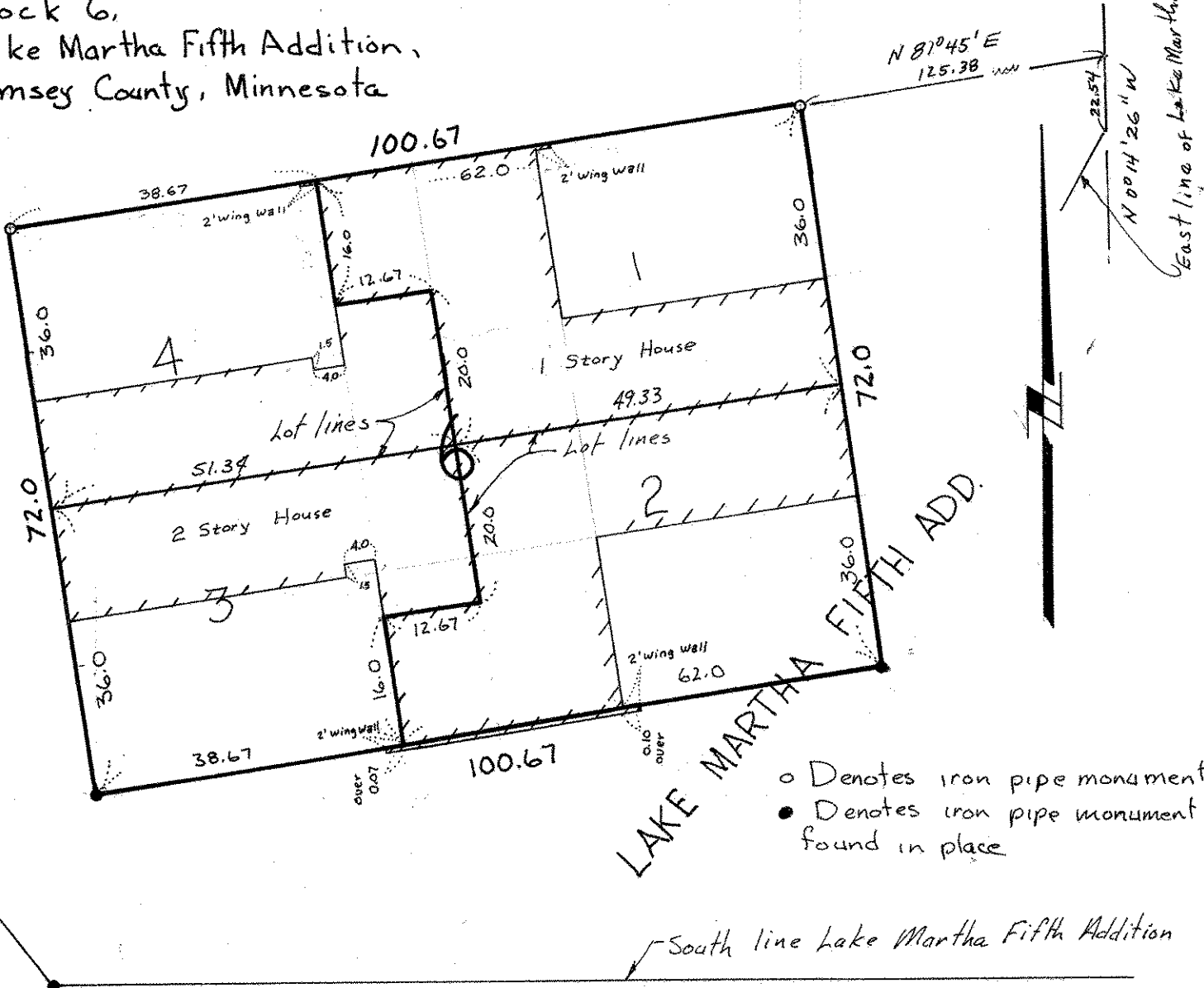
Date *March 1977*

Scale *1" = 20'*

By *Donald W. Schmidt*  
REGISTERED LAND SURVEYOR

### Description:

Lots 1, 2, 3 and 4,  
Block 6,  
Lake Martha Fifth Addition,  
Ramsey County, Minnesota



- o Denotes iron pipe monuments
- Denotes iron pipe monument found in place