

FROM THE OFFICE OF

CHARLES O. GEORGI COMPANY

2215 West County Road B

Saint Paul, Minnesota 55113

REGISTERED CIVIL ENGINEER AND LAND SURVEYOR



I Hereby Certify that this plat shows a survey made by me of the property described on this plat, and that the corners are correctly placed as shown, and that all locations have been correctly shown.

Surveyed For *Steve Kroiss*

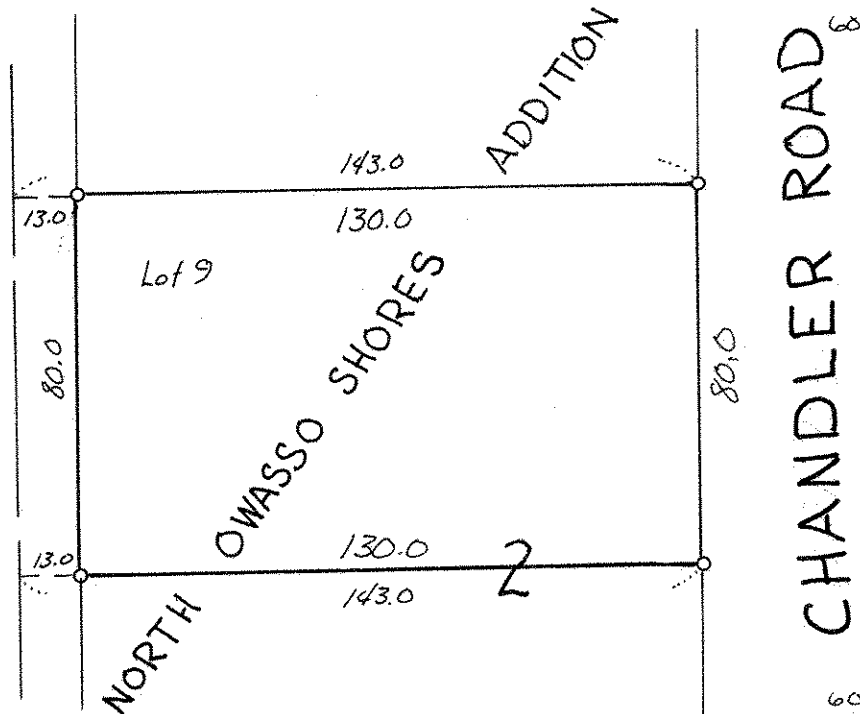
Date *March 1977*

Scale *1" = 40'*

By *Charles O. Georgi*
REGISTERED LAND SURVEYOR

Description:

*Lot 9 except the West 13.0 feet thereof,
Block 2, North Owasso Shores Addition,
Ramsey County, Minnesota.*



*o denotes iron pipe monument.
iron set January 1977*