

FROM THE OFFICE OF

**CHARLES O. GEORGI COMPANY**

2215 West County Road B

Saint Paul, Minnesota 55113

REGISTERED CIVIL ENGINEER AND LAND SURVEYOR

**Certificate  
of Survey**

*I Heroby Certify that this plat shows a survey made by me of the property described on this plat, and that the corners are correctly placed as shown, and that all locations have been correctly shown. Added house location 8/5/77 C.O.G.*

Surveyed For Steve Kroiss

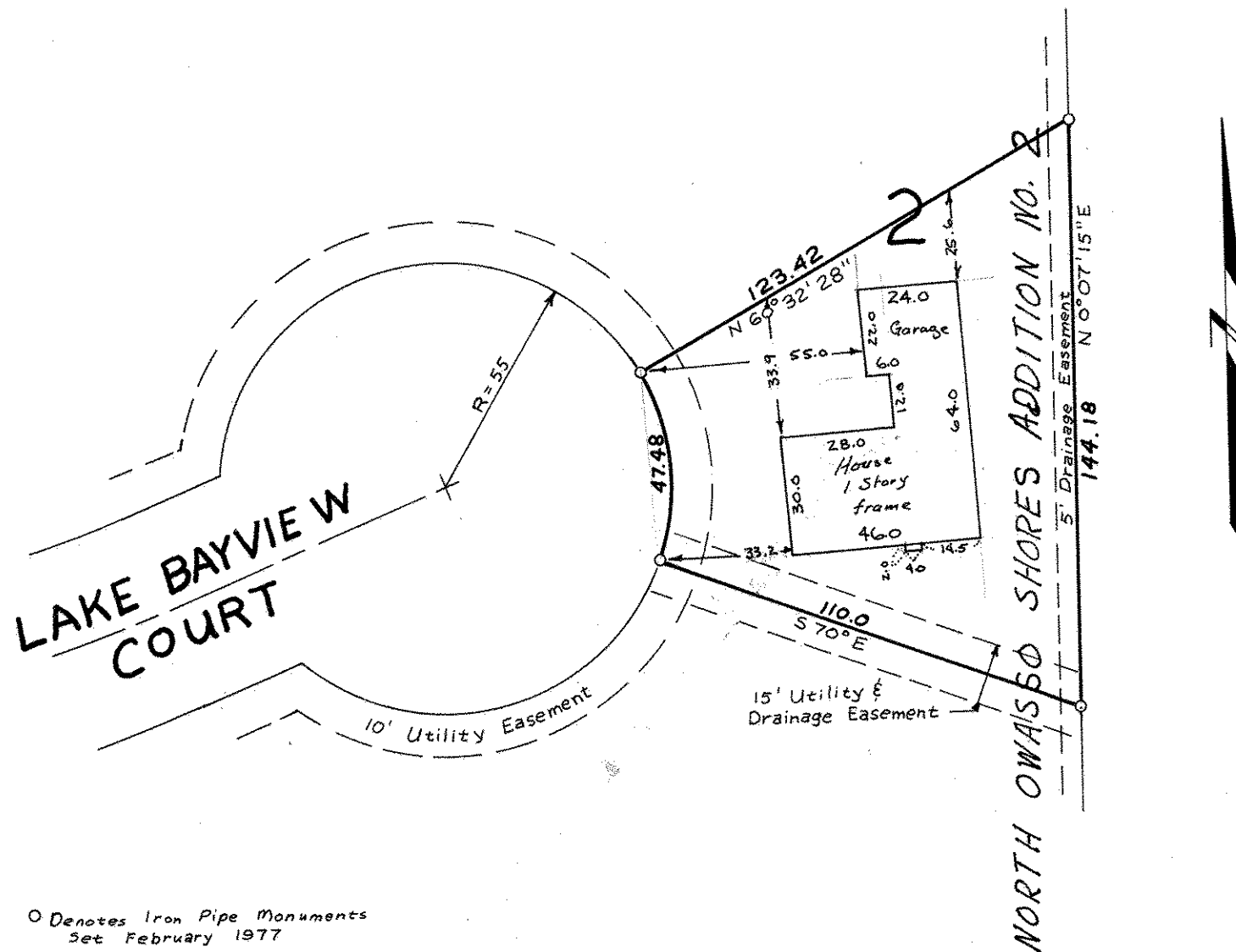
Date June 1977

Scale 1" = 40'

By Charles O. Georgi  
REGISTERED LAND SURVEYOR

**Description:**

Lot 23, Block 2,  
North Owasso Shores Addition No. 2,  
Ramsey County, Minnesota



○ Denotes Iron Pipe Monuments  
Set February 1977

Easements as per plat only