

FROM THE OFFICE OF

CHARLES O. GEORGI COMPANY

2215 West County Road B

Saint Paul, Minnesota 55113

REGISTERED CIVIL ENGINEER AND LAND SURVEYOR

Certificate of Survey

I *Lot-Split* **Hereby Certify** that this plat shows a survey made by me of the property described on this plat, and that the corners are correctly placed as shown, and that all locations have been correctly shown. *No corners placed herewith - some placed earlier with plat.*

Surveyed For *Ray Kroiss*

Date *Sept 3 1976*

Scale *1" = 100'*

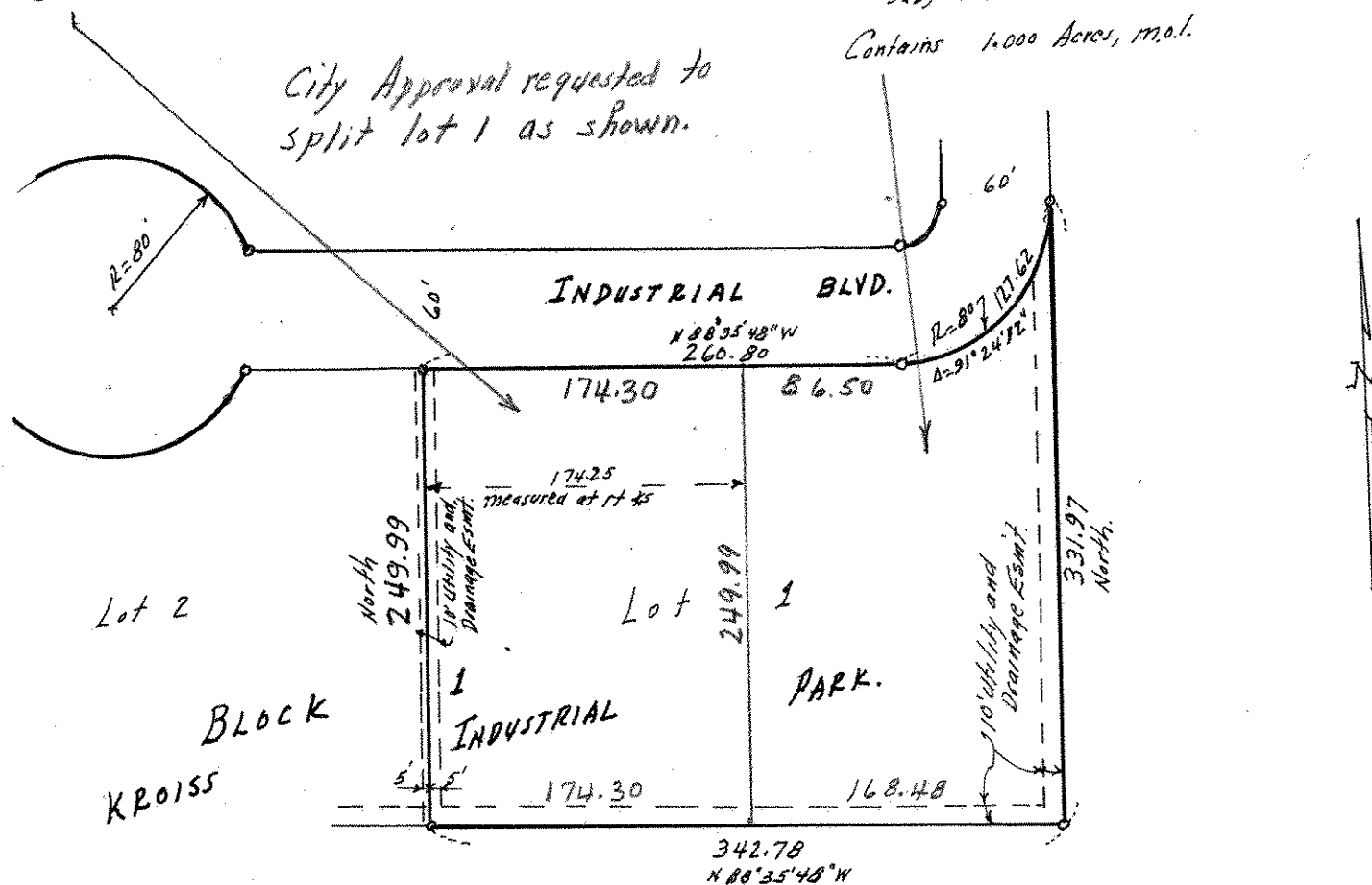
By *Charles O. Georgi*
REGISTERED LAND SURVEYOR

Description:

The West 174.25 feet of Lot 1, Block 1, Kroiss Industrial Park, measured at right angles thereto; according to the plat of record. Subject to easements of record. Ramsey County, Minn. Contains 1.000 Acres, m.o.l.

Description:

Lot 1, Block 1, Kroiss Industrial Park except the West 174.25 feet thereof, measured at right angles thereto; according to the plat of record. Subject to easements of record. Ramsey County, Minn. Contains 1.000 Acres, m.o.l.



o Denotes iron pipe monuments placed earlier with plat.