

FROM THE OFFICE OF

CHARLES O. GEORGI COMPANY

2215 West County Road B

Saint Paul, Minnesota 55113

REGISTERED CIVIL ENGINEER AND LAND SURVEYOR



I Heroby Certify that this plat shows a survey made by me of the property described on this plat, and that the corners are correctly placed as shown, and that all locations have been correctly shown.

8/20/77 Added House Location

Surveyed For *Steve Kroiss*

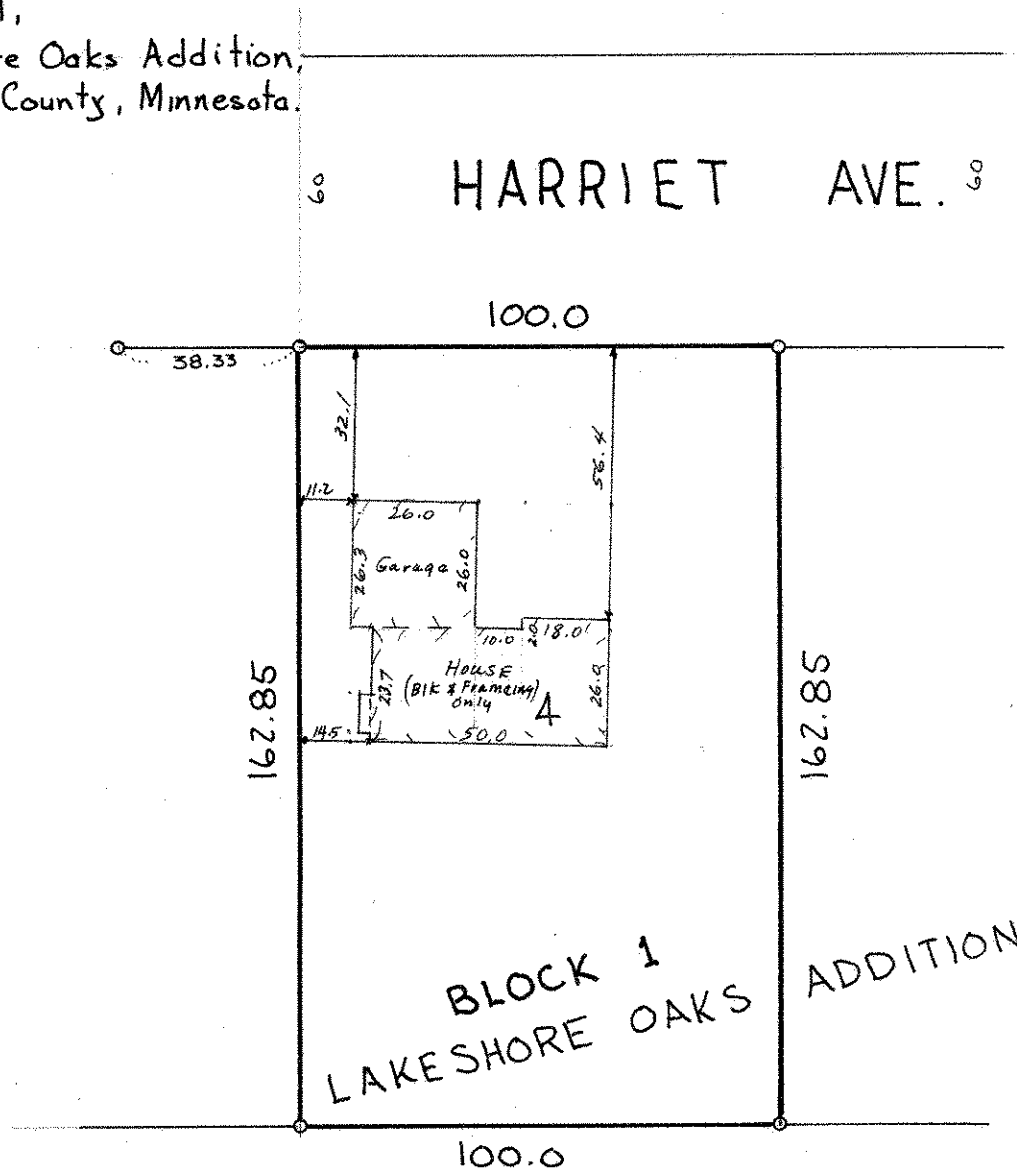
Date *April 1977*

Scale *1" = 40'*

By *Charles O. Georgi*
REGISTERED LAND SURVEYOR

Description:

Lot 4,
Block 1,
Lakeshore Oaks Addition,
Ramsey County, Minnesota.



- Denotes iron monument found in place
- o Denotes iron pipe monument.