

FROM THE OFFICE OF

# CHARLES O. GEORGI COMPANY

2215 West County Road B Saint Paul, Minnesota 55113  
REGISTERED CIVIL ENGINEER AND LAND SURVEYOR

**Certificate  
of Survey**

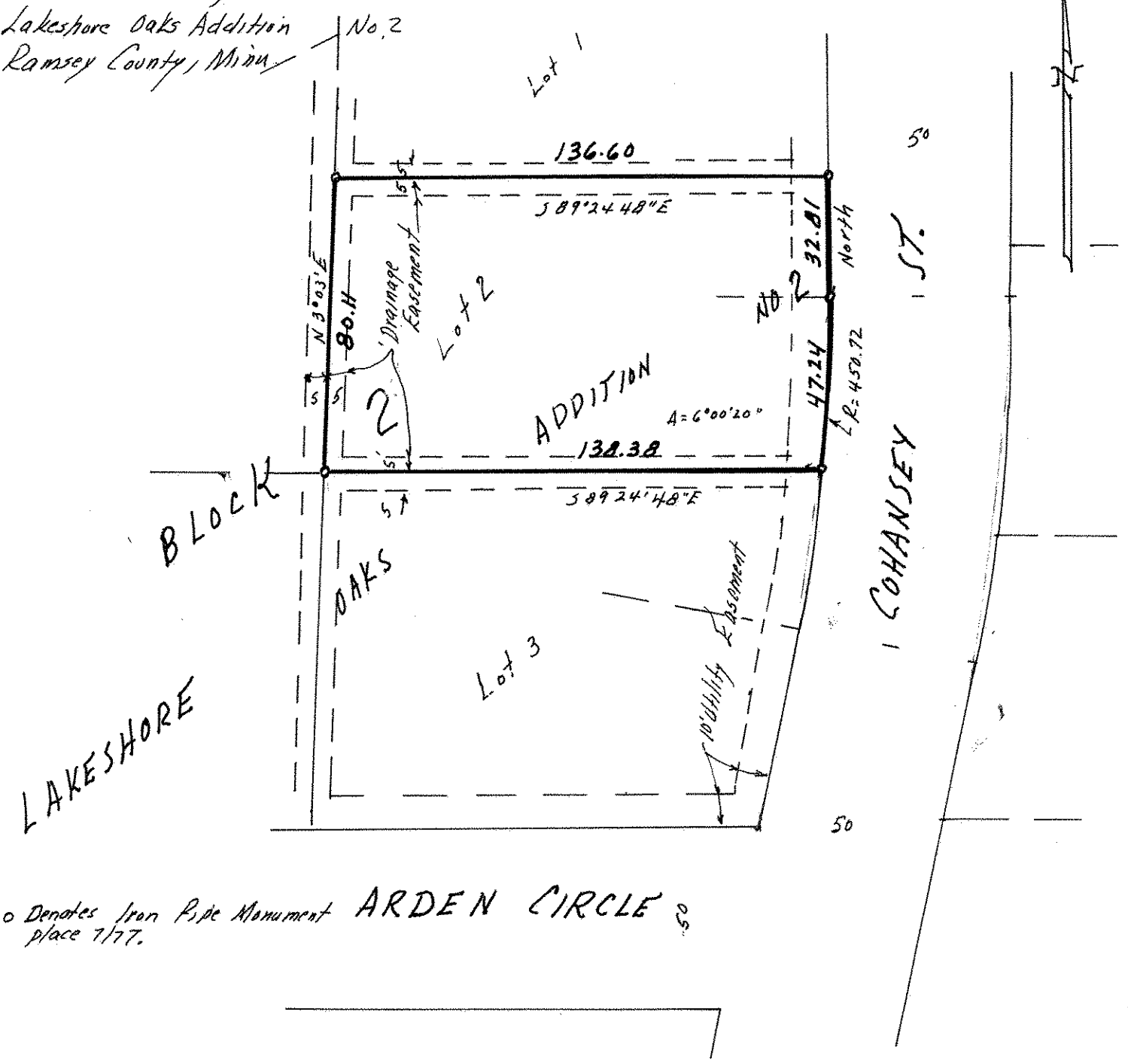
I Hereby Certify that this plat shows a survey made by me of the property described on this plat, and that the corners are correctly placed as shown, and that all locations have been correctly shown.

Surveyed For Dennis Kaufhold  
Date April 1978  
Scale 1" = 40'

By Charles O. Georgi  
REGISTERED LAND SURVEYOR

**Description:**

Lot 2, Block 2,  
Lakeshore Oaks Addition  
Ramsey County, Minn.



o Denotes Iron Pipe Monument placed 7/77. ARDEN CIRCLE 50