

J.W. 27 30 23

FROM THE OFFICE OF

CHARLES O. GEORGI COMPANY

2215 West County Road B

Saint Paul, Minnesota 55113

REGISTERED CIVIL ENGINEER AND LAND SURVEYOR

Certificate of Survey

I Hereby Certify that this plat shows a survey made by me of the property described on this plat, and that the corners are correctly placed as shown, and that all locations have been correctly shown.

Surveyed For *Amos C. Gale*

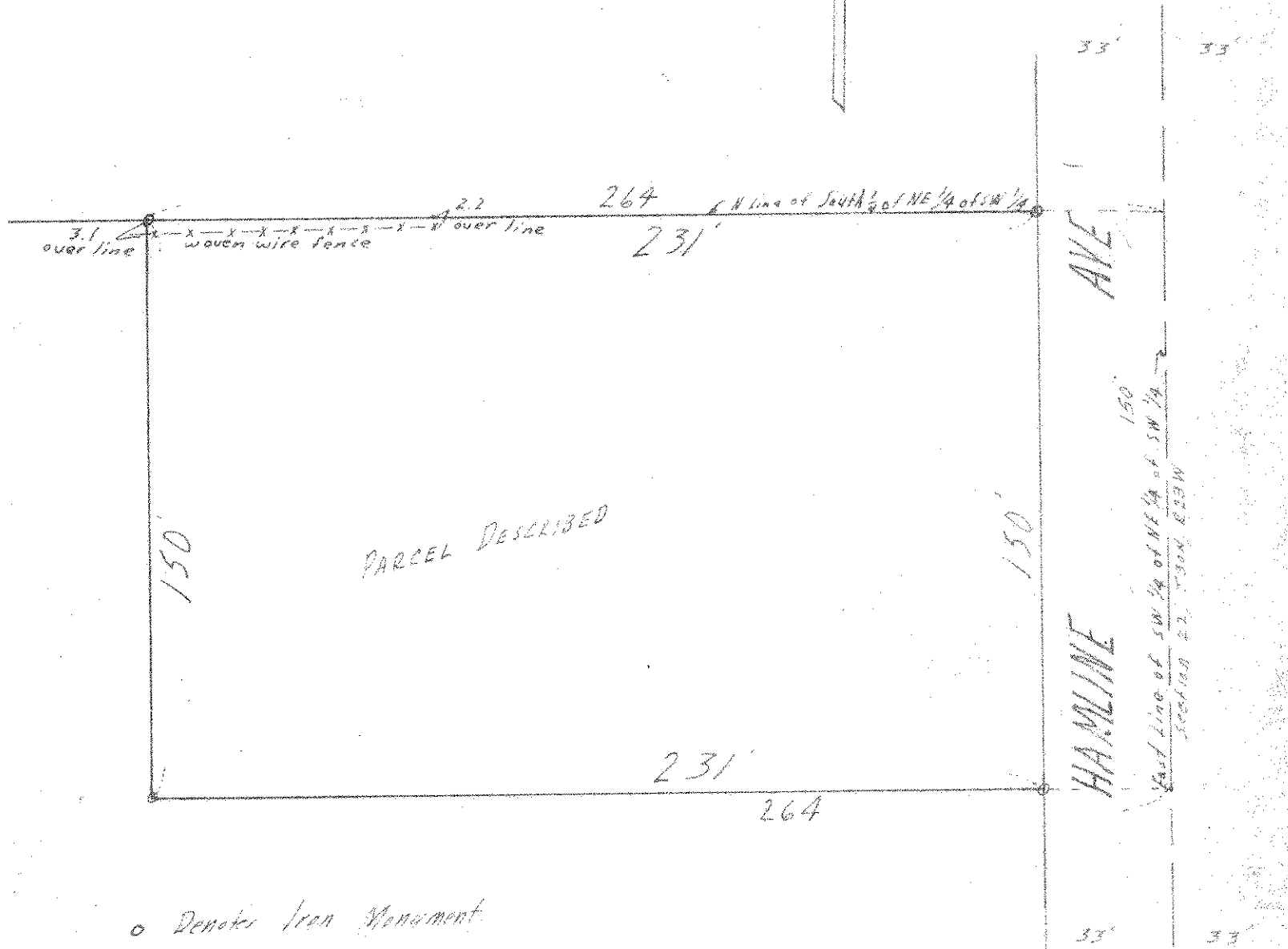
Date *February 1879*

Scale *1" = 40'*

By *Charles O. Georgi*
REGISTERED LAND SURVEYOR

Description:

The North 150 feet of the East 264 feet of South 1/4 of NE 1/4 of SW 1/4 of Section 22, T30N, R23W, Ramsey County, Minn., Subject to Hamline Ave.



o Denotes Iron Monument