

FROM THE OFFICE OF

CHARLES O. GEORGI COMPANY

2215 West County Road B

Saint Paul, Minnesota 55113

REGISTERED CIVIL ENGINEER AND LAND SURVEYOR



Certificate of Survey

For: Walsh Homes

I Hereby Certify that this plat shows a building location survey made by me on the property described on this plat, and that all locations, have been correctly shown.

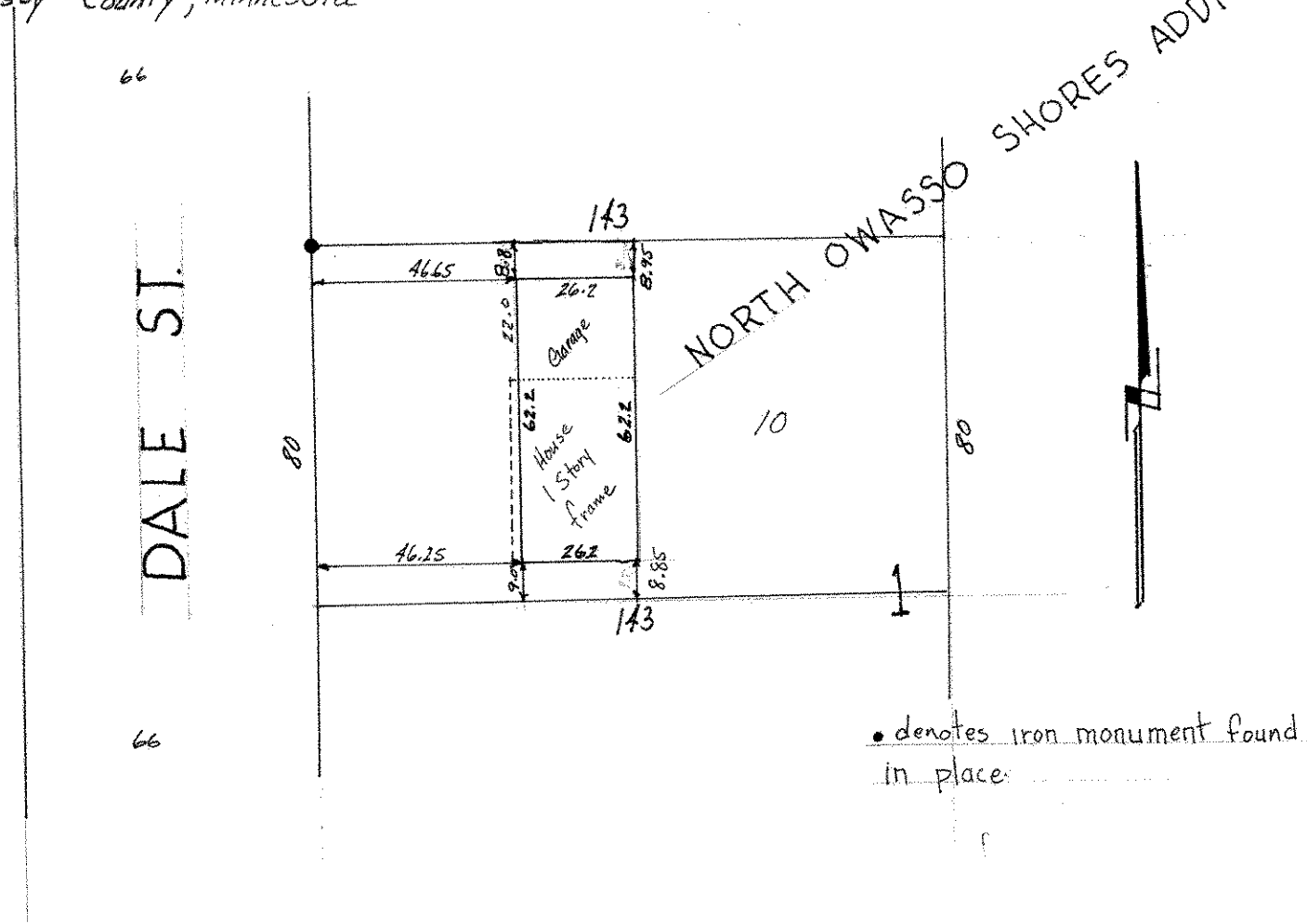
Date October 1974

Scale 1" = 40'

By Charles O. Georgi
REGISTERED LAND SURVEYOR

Description:

Lot 10,
Block 1,
North Owasso Shores Addition
Ramsey County, Minnesota



• denotes iron monument found in place