

# CHARLES O. GEORGI COMPANY

2215 West County Road B

Saint Paul, Minnesota 55113

REGISTERED CIVIL ENGINEER AND LAND SURVEYOR



## Certificate of Survey

I Herby Certify that this plat shows a survey made by me of the property described on this plat, and that the corners are correctly placed as shown, and that all locations have been correctly shown.

Surveyed For Clyde Rehbein - Northway Const.

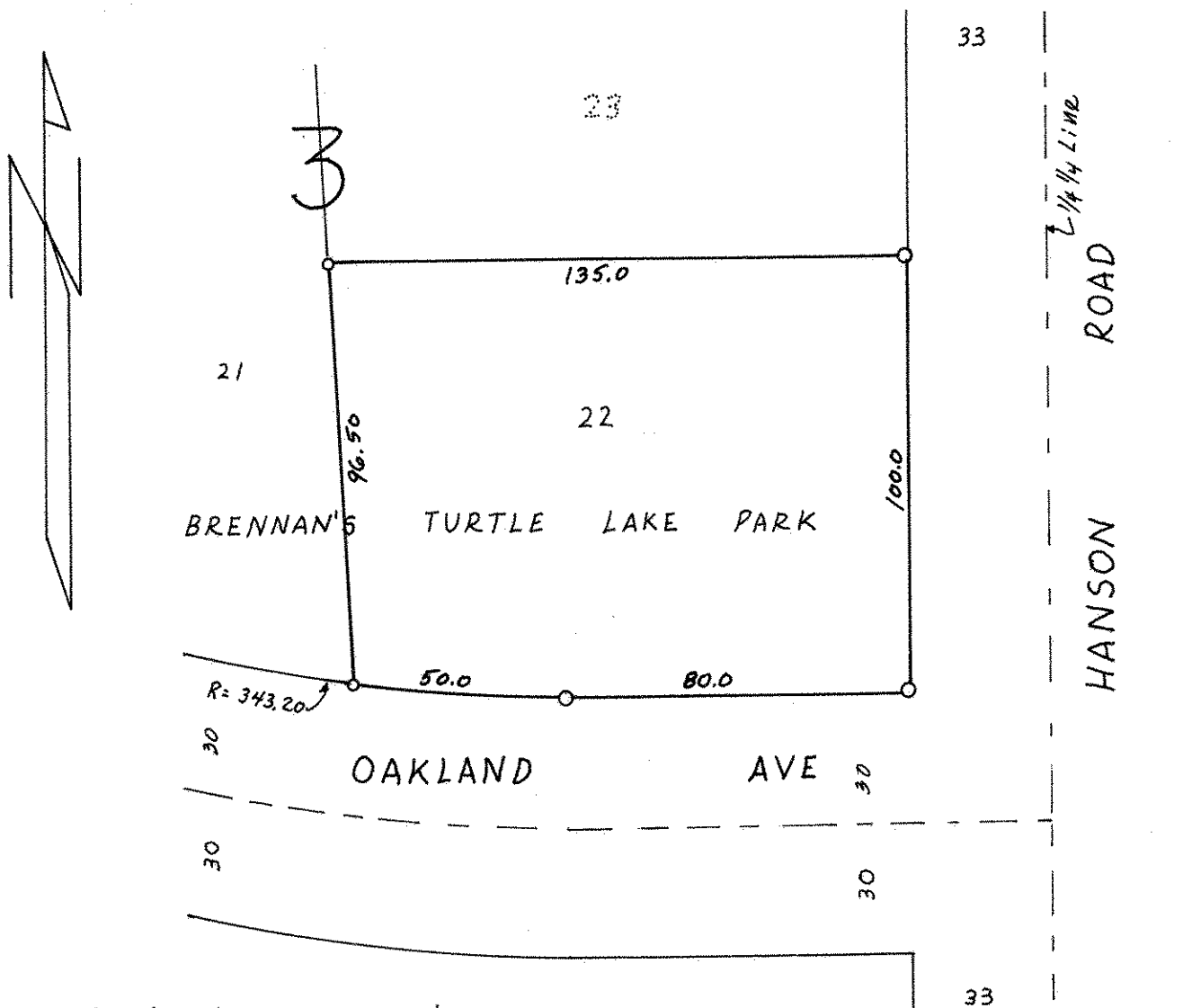
Date July 1972

Scale 1" = 40'

By Charles O. Georgi  
REGISTERED LAND SURVEYOR

**Description:**

Lot 22, Block 3, Brennan's Turtle Lake Park,  
Ramsey County, Minn



o Denotes Iron Monument