

SW 35 30 23

FROM THE OFFICE OF

# CHARLES O. GEORGI COMPANY

2215 West County Road B

Saint Paul, Minnesota 55113

REGISTERED CIVIL ENGINEER AND LAND SURVEYOR



## Certificate of Survey

I Hereby Certify that this plat shows a survey made by me of the property described on this plat, and that the corners are correctly placed as shown, and that all locations have been correctly shown.

12/19/72 - Added House location. C.O.G.

Surveyed For Anderson Const.

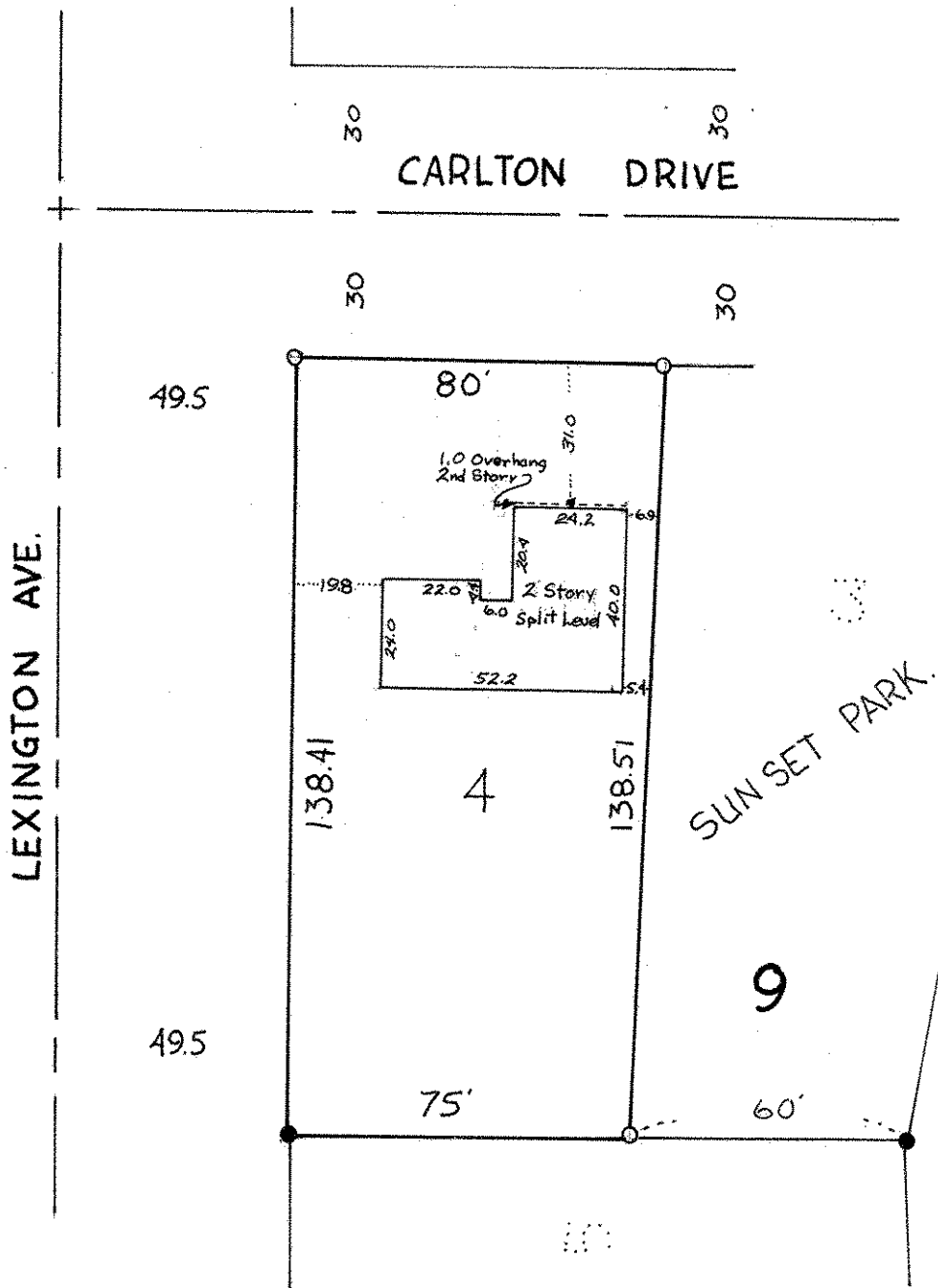
Date September 1972

Scale 1" = 40'

By Charles O. Georgi  
REGISTERED LAND SURVEYOR

**Description:**

Lot 4, Block 9, Sunset Park.  
Ramsey County, Minnesota.



o Denotes iron monument

• Denotes iron monument found in place.