

FROM THE OFFICE OF

CHARLES O. GEORGI COMPANY

2215 West County Road B

Saint Paul, Minnesota 55113

REGISTERED CIVIL ENGINEER AND LAND SURVEYOR

Certificate of Survey

I Heroby Certify that this plat shows a survey made by me of the property described on this plat, and that the corners are correctly placed as shown, and that all locations have been correctly shown.

Surveyed For Gordon Hedlund

Date November 1976

Scale 1" = 40'

By Charles O. Georgi
REGISTERED LAND SURVEYOR

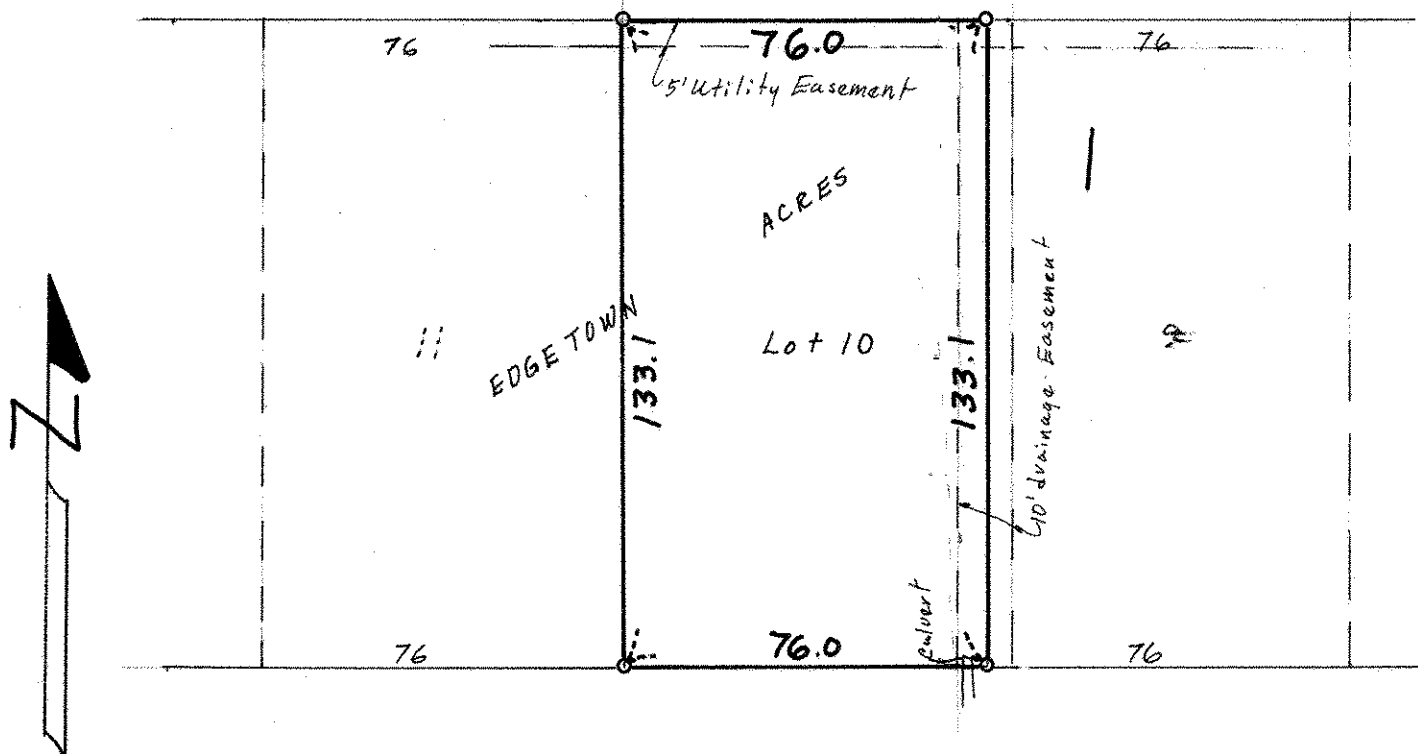
Description:

* Lot 10, Block 1, Edgetown Acres

Ramsey County, Minnesota

* Lot 10, BK1 marked Reserved on original Plat of Record.

UNPLATTED LAND



o Denotes Iron Monument

LOIS DRIVE