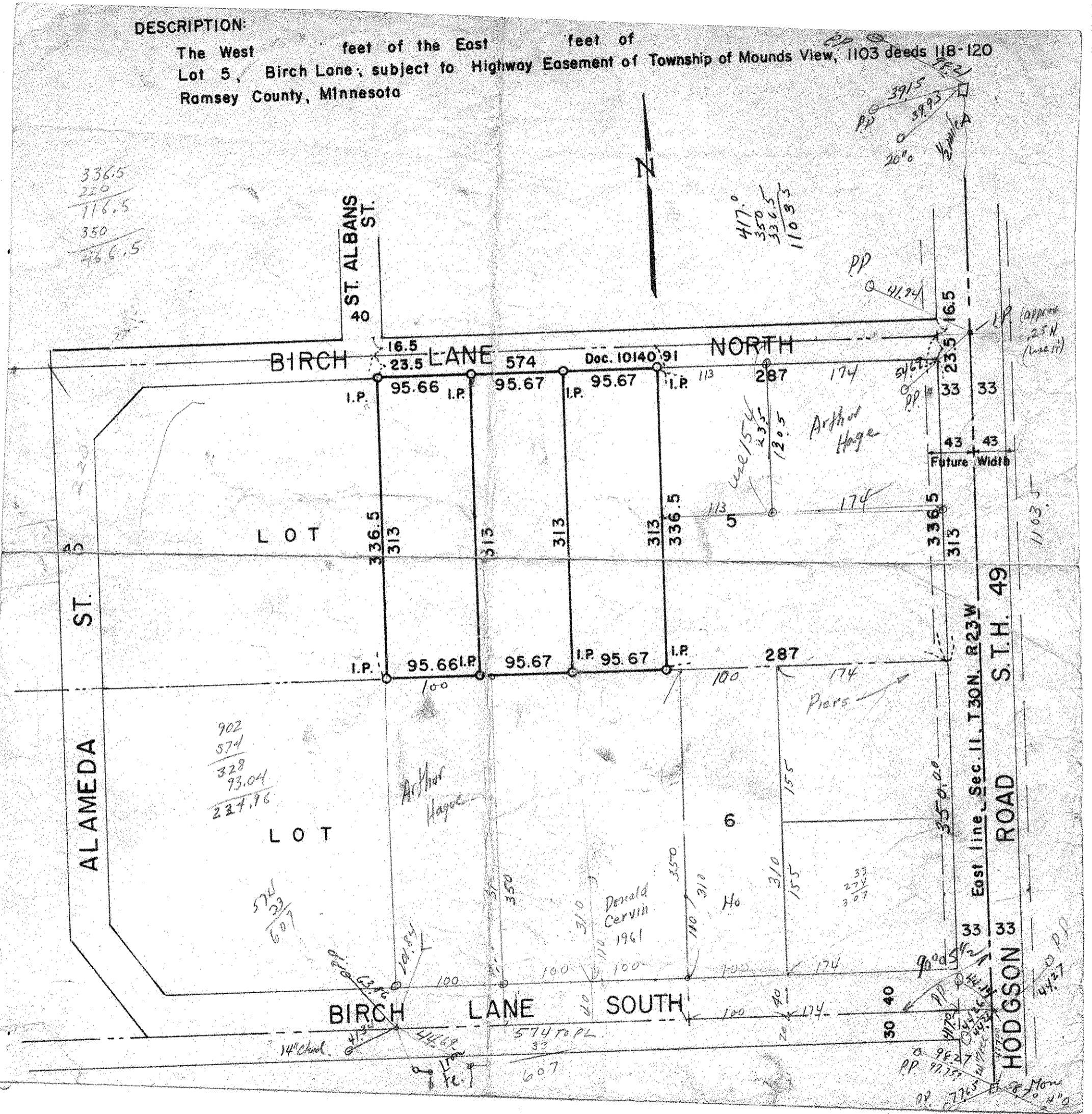


**DESCRIPTION:**

The West  $\frac{336.5}{220}$  feet of the East  $\frac{350}{466.5}$  feet of  
 Lot 5, Birch Lane; subject to Highway Easement of Township of Mounds View, 1103 deeds 118-120  
 Ramsey County, Minnesota



336.5  
 220  
 ---  
 116.5  
 350  
 ---  
 466.5

417.0  
 350  
 ---  
 336.5  
 1103.5

902  
 574  
 ---  
 328  
 93.04  
 ---  
 224.96

574  
 328  
 ---  
 607

233  
 307  
 ---  
 540

9827  
 9779  
 ---  
 7265

(approx  
 25 ft  
 (use it))

1103.5

East line, Sec. 11, T.30N., R.23W.

S.T.H. 49

HODGSON ROAD

4427  
 4127  
 ---  
 8554