

NW 36 30 23

FROM THE OFFICE OF

CHARLES O. GEORGI COMPANY

2215 West County Road B

Saint Paul, Minnesota 55113

REGISTERED CIVIL ENGINEER AND LAND SURVEYOR

Certificate of Survey

I Hereby Certify that this plat shows a survey made by me of the property described on this plat, and that the corners are correctly placed as shown, and that all locations have been correctly shown.

2/6/80 Addl proposed House *W/S*
Surveyed For *Liking Unlimited, Inc.*

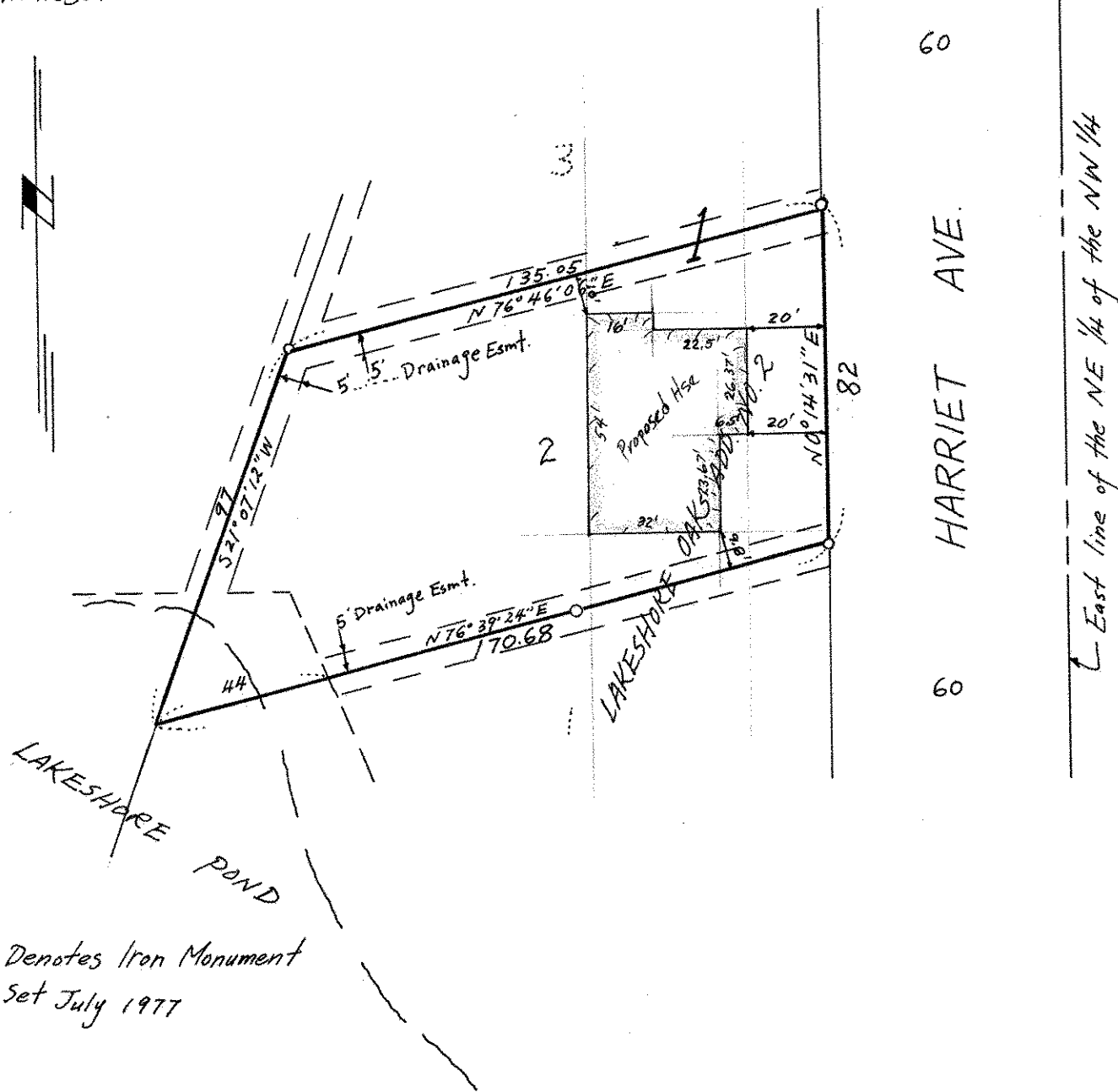
Date *Dec. 1977*

Scale *1" = 40'*

By *Charles O. Georgi*
REGISTERED LAND SURVEYOR

Description:

*Lot 2, Block 1,
Lakeshore Oaks Addition No. 2,
Ramsey County,
Minnesota*



o Denotes Iron Monument
Set July 1977