

FROM THE OFFICE OF

# CHARLES O. GEORGI COMPANY

2215 West County Road B

Saint Paul, Minnesota 55113

REGISTERED CIVIL ENGINEER AND LAND SURVEYOR

## Certificate of Survey

I Hereby Certify that this plat shows a survey made by me of the property described on this plat, and that the corners are correctly placed as shown, and that all locations have been correctly shown.

file → Henry Schneider - owner.

Surveyed For Don Self

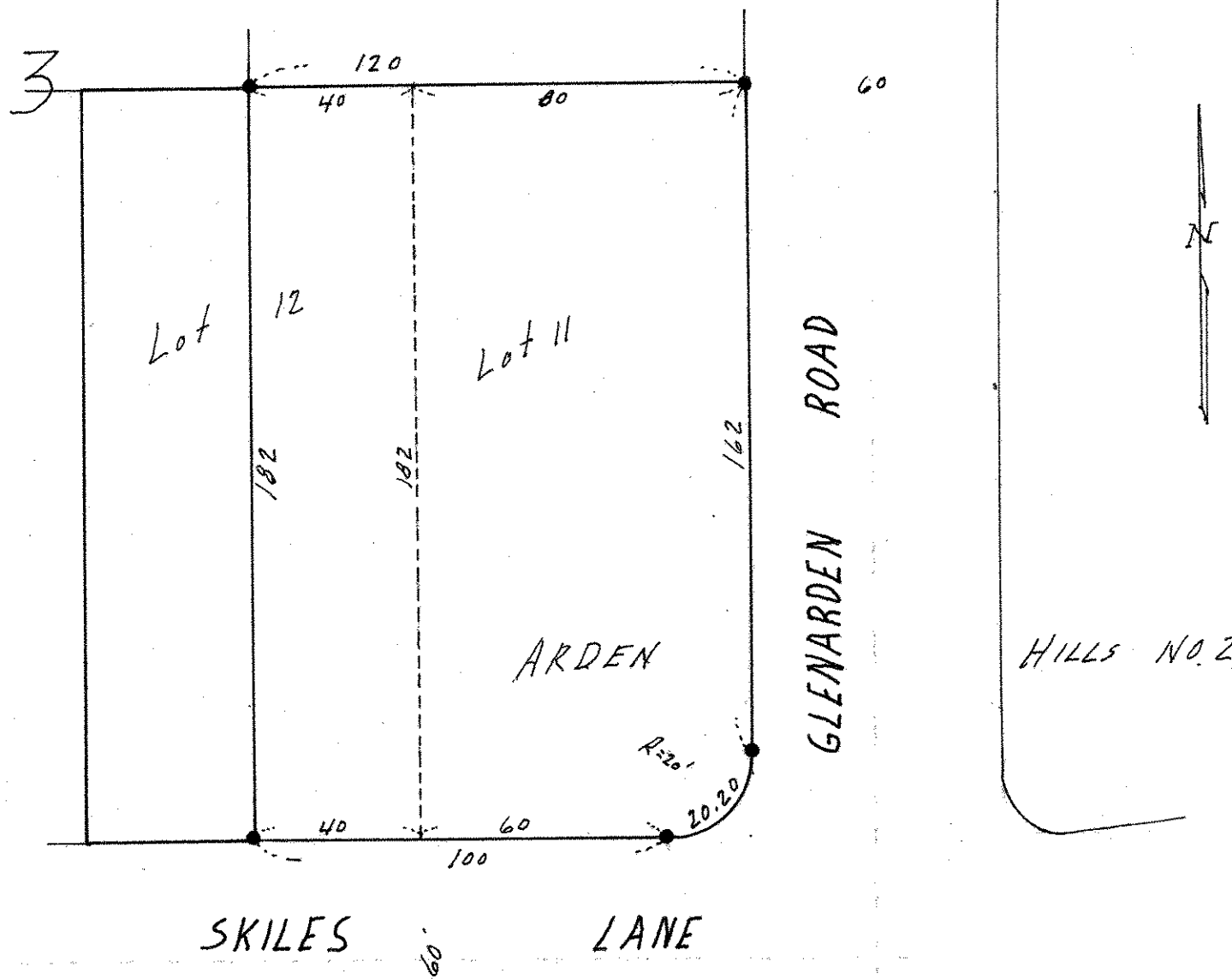
Date May 1978

Scale 1" = 40'

By Charles O. Georgi  
REGISTERED LAND SURVEYOR

**Description:**

Lot 11 and the East 1/2 of Lot 12, Block 3,  
Arden Hills No 2 Ramsey County, Minn.



- Iron Monument.
- Iron in Place.