

FROM THE OFFICE OF

CHARLES O. GEORGI COMPANY

2215 West County Road B

Saint Paul, Minnesota 55113

REGISTERED CIVIL ENGINEER AND LAND SURVEYOR

**Certificate
of Survey**

I Heroby Certify that this plat shows a survey made by me of the property described on this plat, and that the corners are correctly placed as shown, and that all locations have been correctly shown.

Pratt Construction Inc.

Surveyed For Niemiec and Burrow Inc. - Realtor

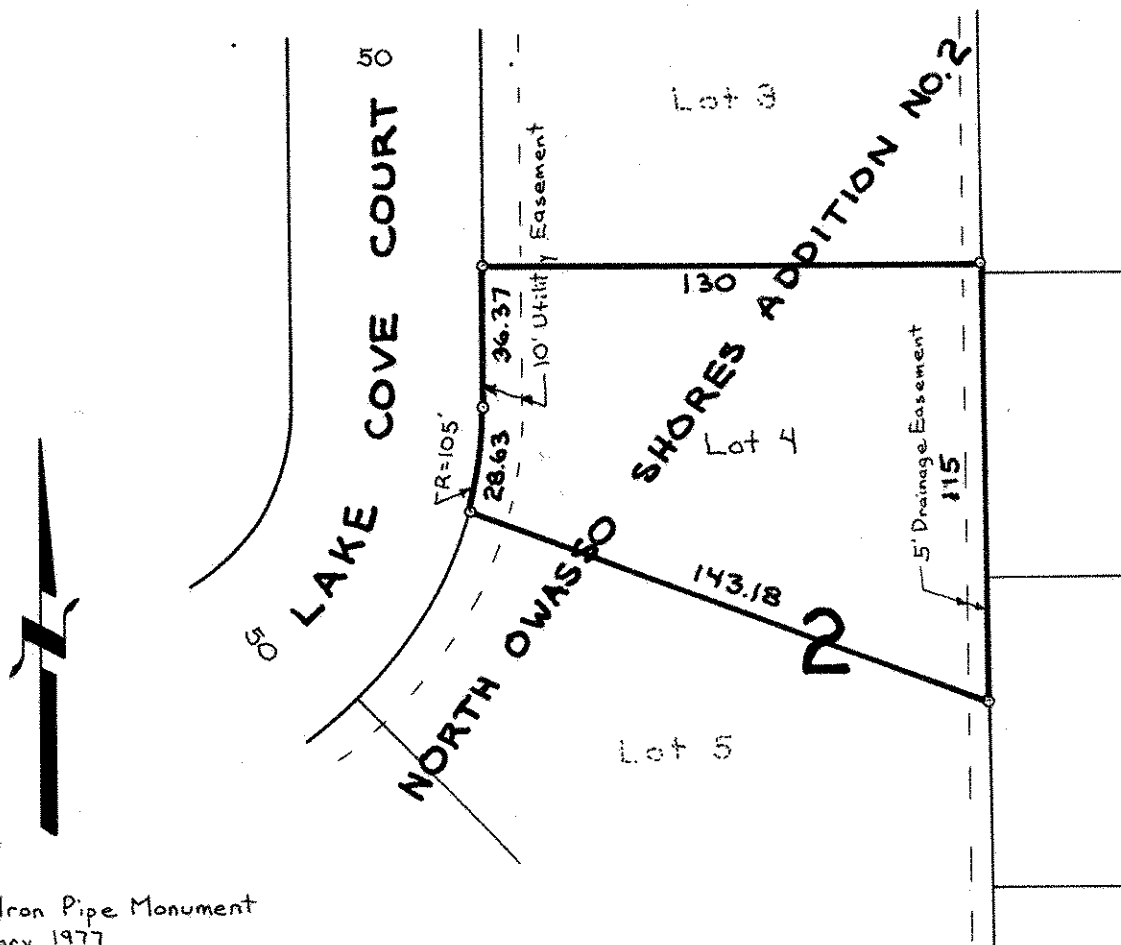
Date May 1977

Scale 1" = 50'

By *Charles O. Georgi*
REGISTERED LAND SURVEYOR

Description:

Lot 4,
Block 2,
North Owasso Shores Addition No. 2,
Ramsey County, Minn.



o Denotes Iron Pipe Monument
set February 1977