

FROM THE OFFICE OF

CHARLES O. GEORGI COMPANY

2215 West County Road B

Saint Paul, Minnesota 55113

REGISTERED CIVIL ENGINEER AND LAND SURVEYOR

Certificate of Survey

I Hereby Certify that this plat shows a survey made by me of the property described on this plat, and that the corners are correctly placed as shown, and that all locations have been correctly shown.

Surveyed For Clyde Rehbein - Northway Const.

Date July 1972

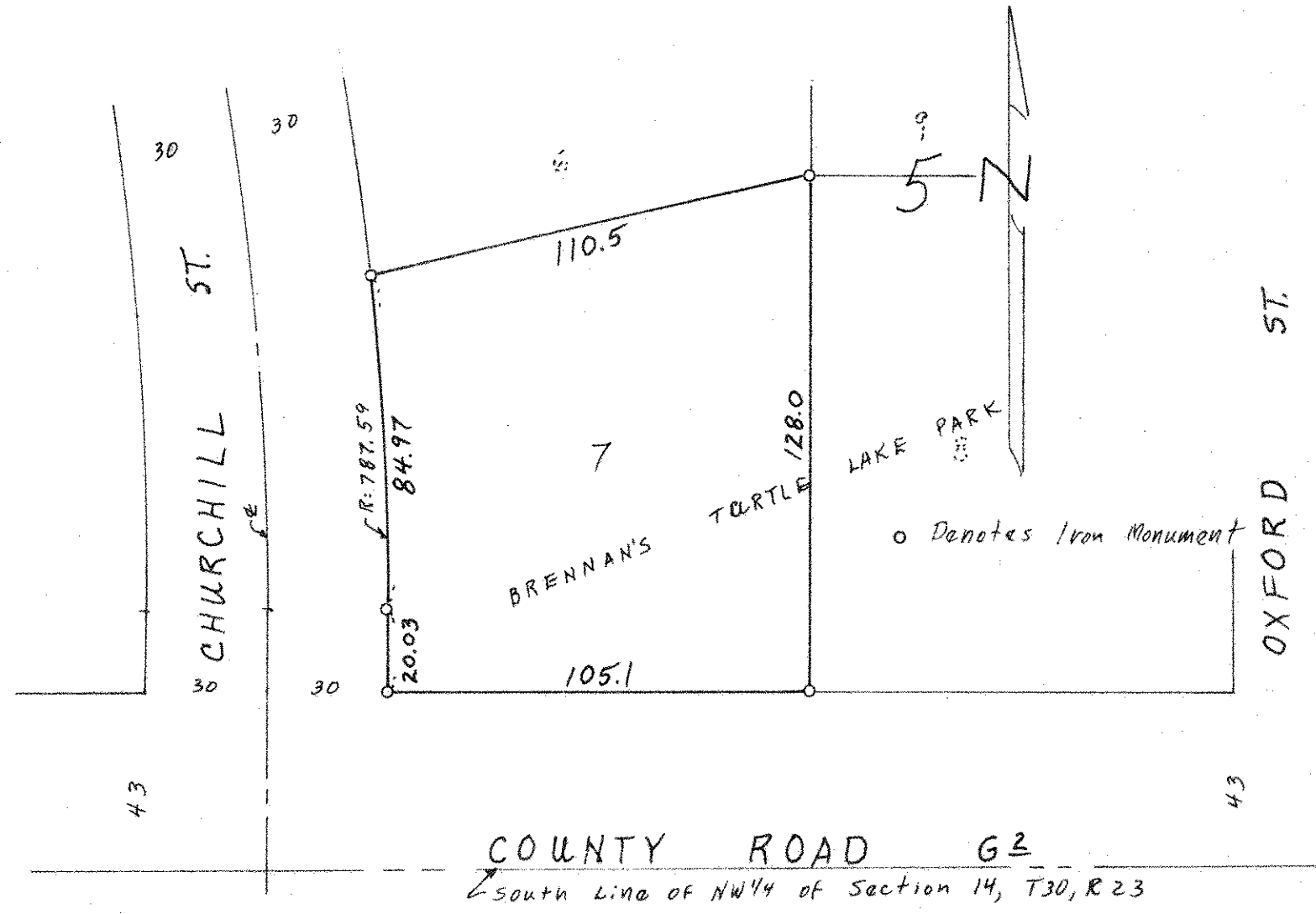
Scale 1" = 40'

By Charles O. Georgi
REGISTERED LAND SURVEYOR

Description:

LOT 7, Block 5, Brennan's Turtle Lake Park,
Subject to easements of record.

Ramsey County, Minn.



COUNTY ROAD G2
South Line of NW 1/4 of Section 14, T30, R23