

FROM THE OFFICE OF NW

CHARLES O. GEORGI COMPANY

2215 West County Road B

Saint Paul, Minnesota 55113

REGISTERED CIVIL ENGINEER AND LAND SURVEYOR

Certificate of Survey

I Hereby Certify that this plat shows a survey made by me of the property described on this plat, and that the corners are correctly placed as shown, and that all locations have been correctly shown.

Surveyed For Clyde Rehbein - Northway Const

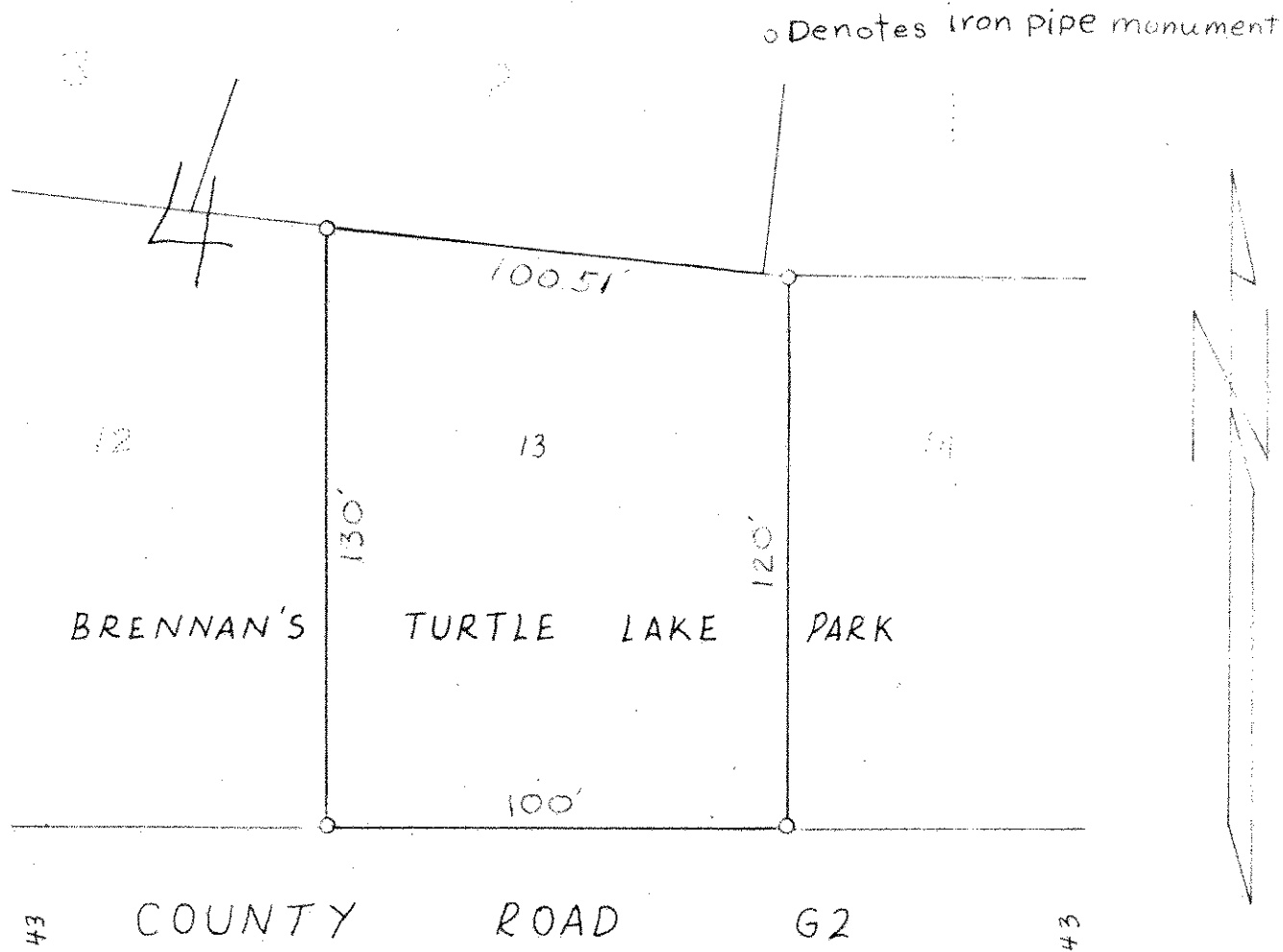
Date July 1972

Scale 1" = 40'

By Charles O. Georgi
REGISTERED LAND SURVEYOR

Description:

Lot 13, Block 4, Brennan's Turtle Lake Park
Subject to easement of record
Ramsey County, Minnesota



South Line of Northwest Quarter
of section 14, T30 R23