

NW 36 30 23

FROM THE OFFICE OF

# CHARLES O. GEORGI COMPANY

2215 West County Road B

Saint Paul, Minnesota 55113

REGISTERED CIVIL ENGINEER AND LAND SURVEYOR

## Certificate of Survey

I Hereby Certify that this plat shows a survey made by me of the property described on this plat, and that the corners are correctly placed as shown, and that all locations have been correctly shown.

Surveyed For *Tom Engel*.....

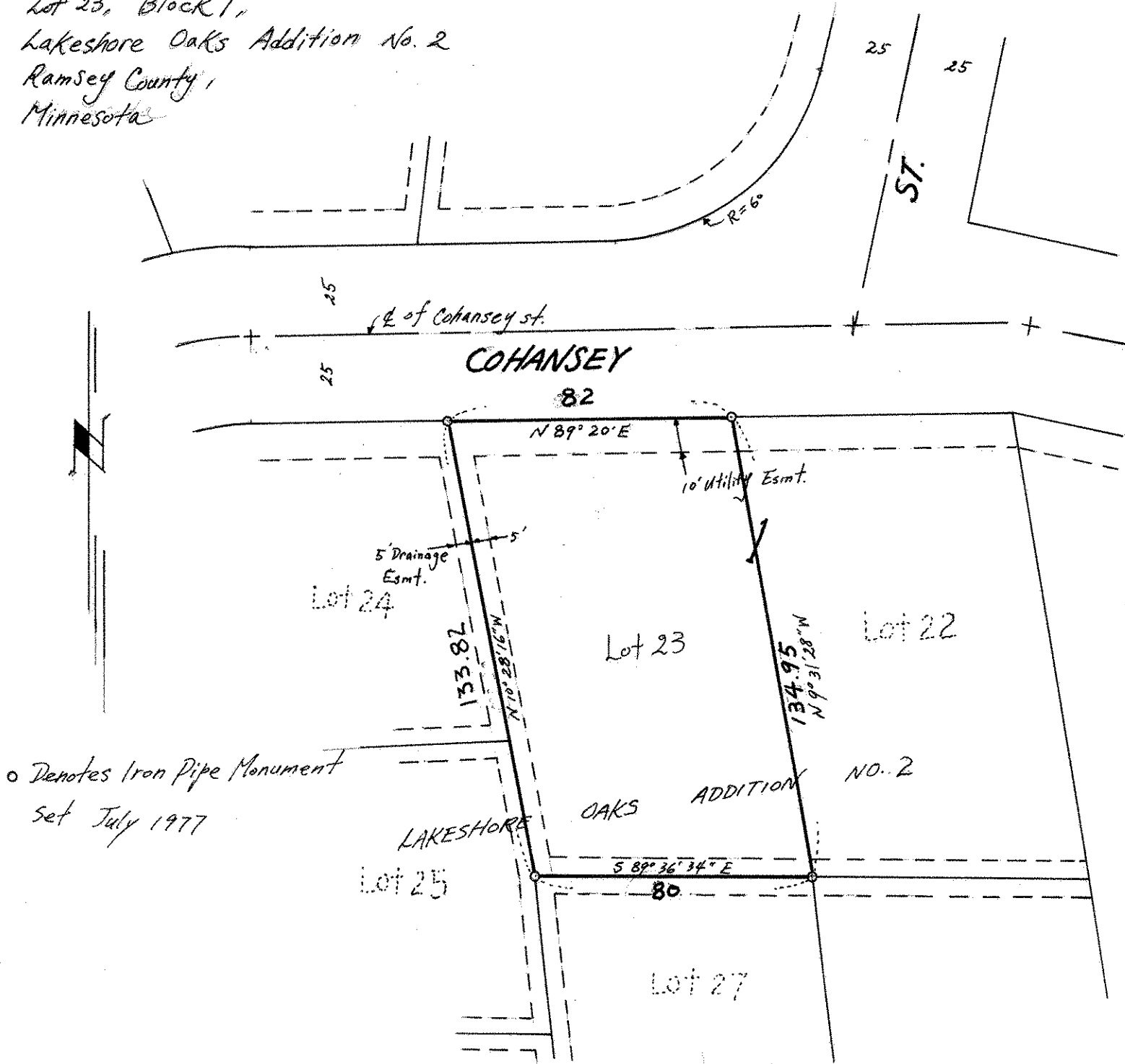
Date *Nov. 1977*.....

Scale *1" = 40'*.....

By *Donald W. Schmidt*  
REGISTERED LAND SURVEYOR

Description:

*Lot 23, Block 1,  
Lakeshore Oaks Addition No. 2  
Ramsey County,  
Minnesota*



o Denotes Iron Pipe Monument  
set July 1977