

Certificate of Survey

From the office of
GEORGI-SCHMIDT & ASSOC. INC.
3092 No. Lexington Ave., Roseville, Mn. 55113
LAND SURVEYING
483-4408

I Hereby Certify that this plat shows a survey made by me of the property described on this plat, and that the corners are correctly placed as shown, and that all locations have been correctly shown.

Job Number: 250

Surveyed For Greg Sowijsa - Living Unlimited

Date 2/14/79

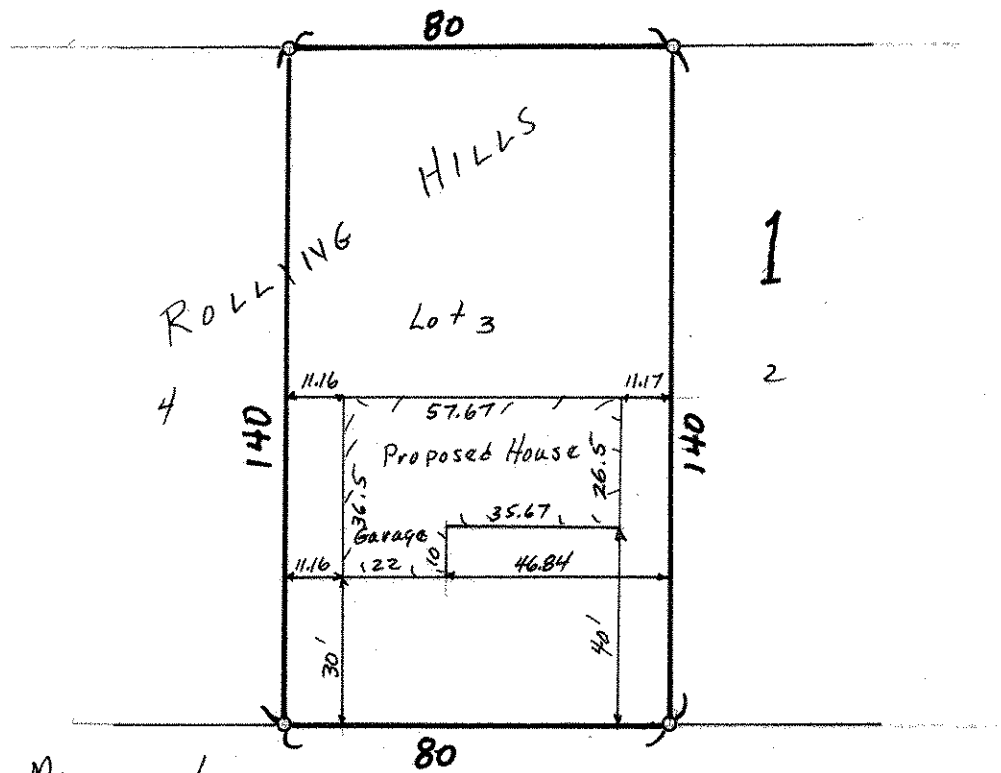
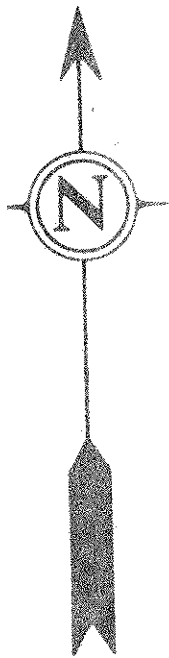
Scale 1" = 40'

By Donald W. Schmidt
REGISTERED LAND SURVEYOR

Description:

Lot 3, Block 1, Rolling Hills

Ramsay County, Minnesota



o Denotes Iron Monument

43 VICTORIA ST. 43

South line of NW 1/4 Section 23, T30N, R23W