

FROM THE OFFICE OF

# CHARLES O. GEORGI COMPANY

2215 West County Road B

Saint Paul, Minnesota 55113

REGISTERED CIVIL ENGINEER AND LAND SURVEYOR



*I Hereby Certify that this plat shows a survey made by me of the property described on this plat, and that the corners are correctly placed as shown, and that all locations have been correctly shown.*

Surveyed For *Jahn Mac Donald*

Date *April 1970*

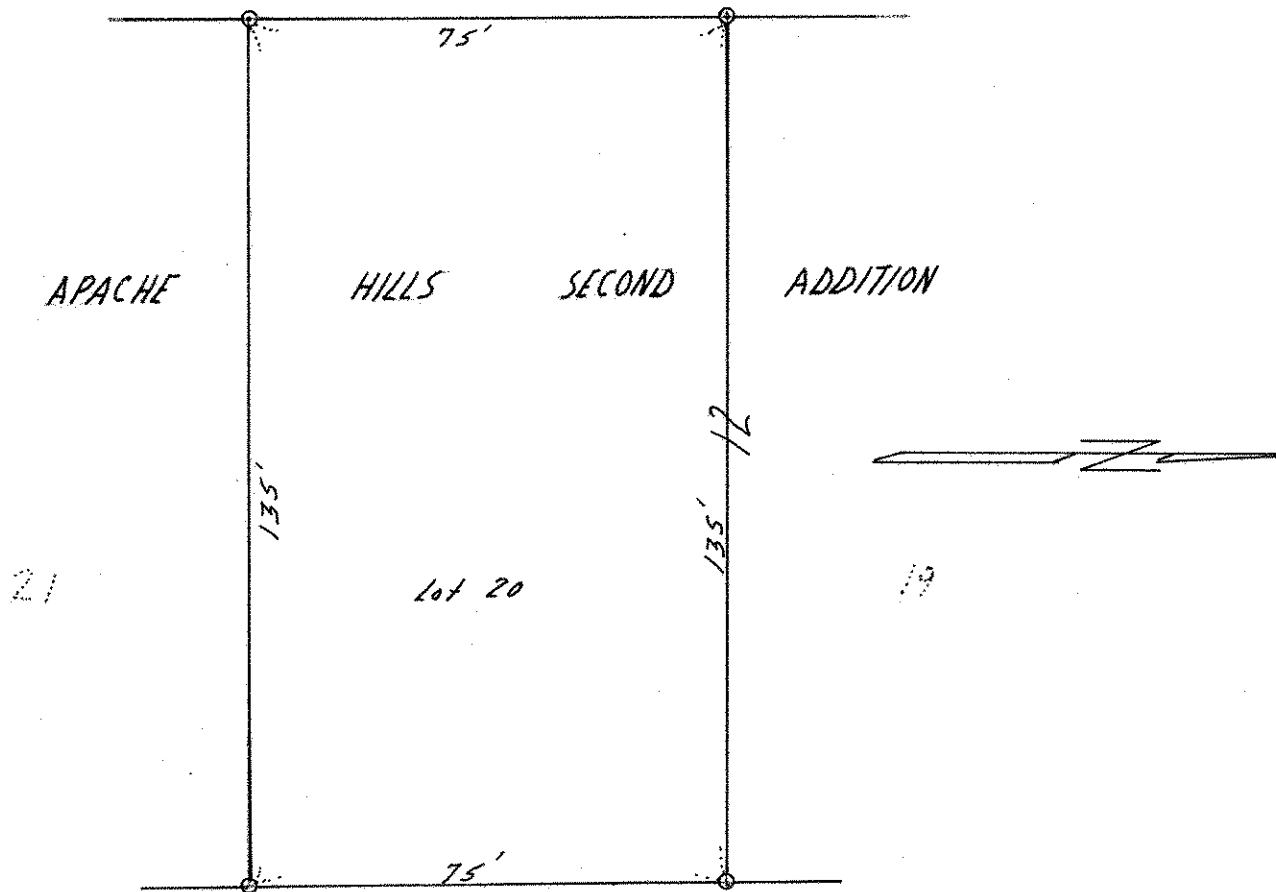
Scale *1" = 30'*

By *Charles O. Georgi*  
REGISTERED LAND SURVEYOR

**Description:**

*Lot 20,  
Block 12,  
Apache Hills Second Addition  
Ramsey County, Minn.*

*60' Mc CALLUM DRIVE 60'*



○ Denotes Iron Monument