

FROM THE OFFICE OF

CHARLES O. GEORGI COMPANY

2215 West County Road B

Saint Paul, Minnesota 55113

REGISTERED CIVIL ENGINEER AND LAND SURVEYOR

**Certificate
of Survey**

I Hereby Certify that this plat shows a survey made by me of the property described on this plat, and that the corners are correctly placed as shown, and that all locations have been correctly shown.

Surveyed For *Michals Construction*

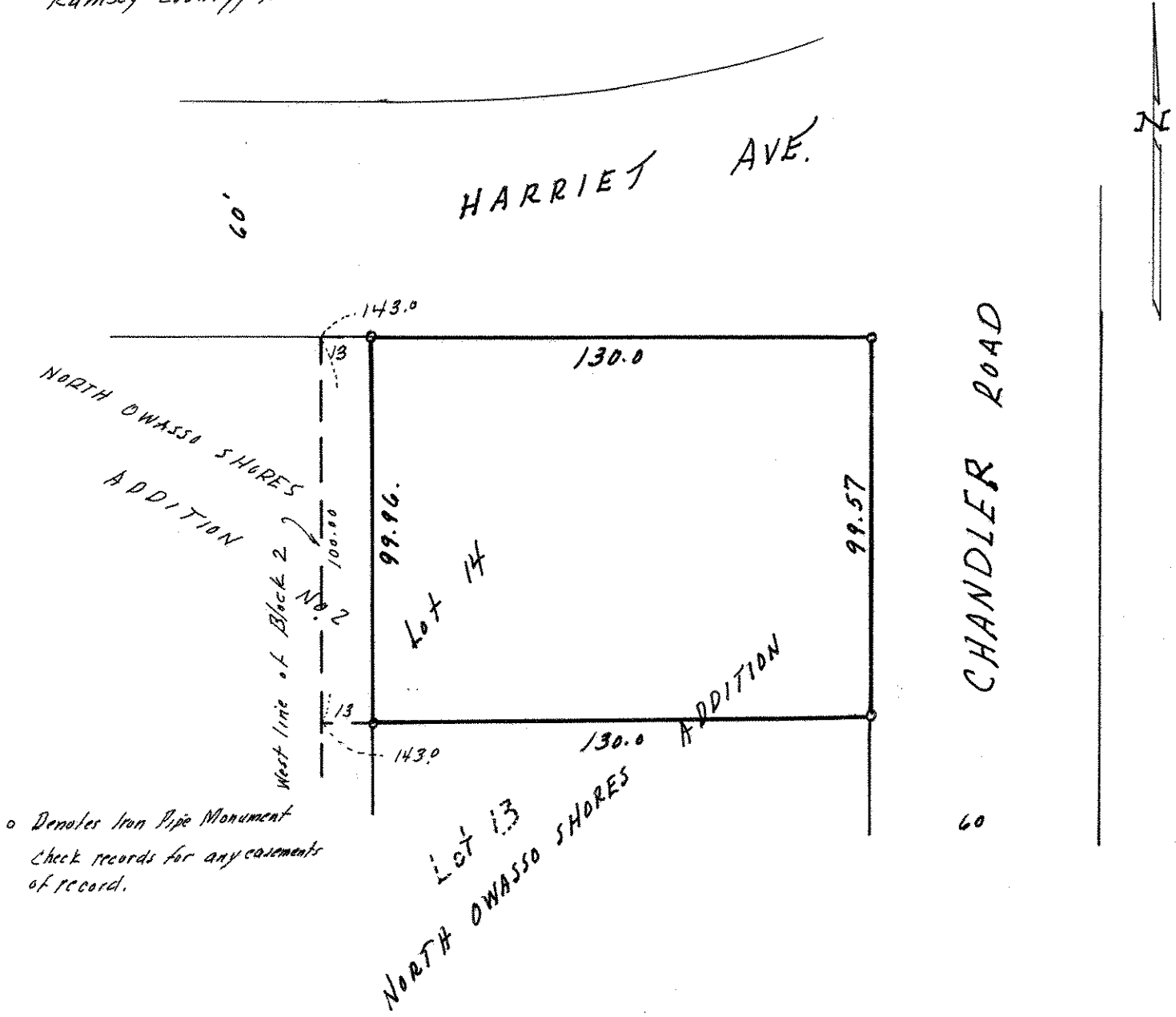
Date *January 24, 1978*

Scale *1" = 40'*

By *Charles O. Georgi*
REGISTERED LAND SURVEYOR

Description:

*Lot 14 except the West 13.0 feet thereof
Block 2, North Owasso Shores Addition
Ramsey County, Minn.*



o Denotes Iron Pipe Monument
Check records for any encumbrances
of record.