

FROM THE OFFICE OF

# CHARLES O. GEORGI COMPANY

2215 West County Road B

Saint Paul, Minnesota 55113

REGISTERED CIVIL ENGINEER AND LAND SURVEYOR

## Certificate of Survey

I Hereby Certify that this plat shows a survey made by me of the property described on this plat, and that the corners are correctly placed as shown, and that all locations have been correctly shown.

Surveyed For *Mishels Const.*

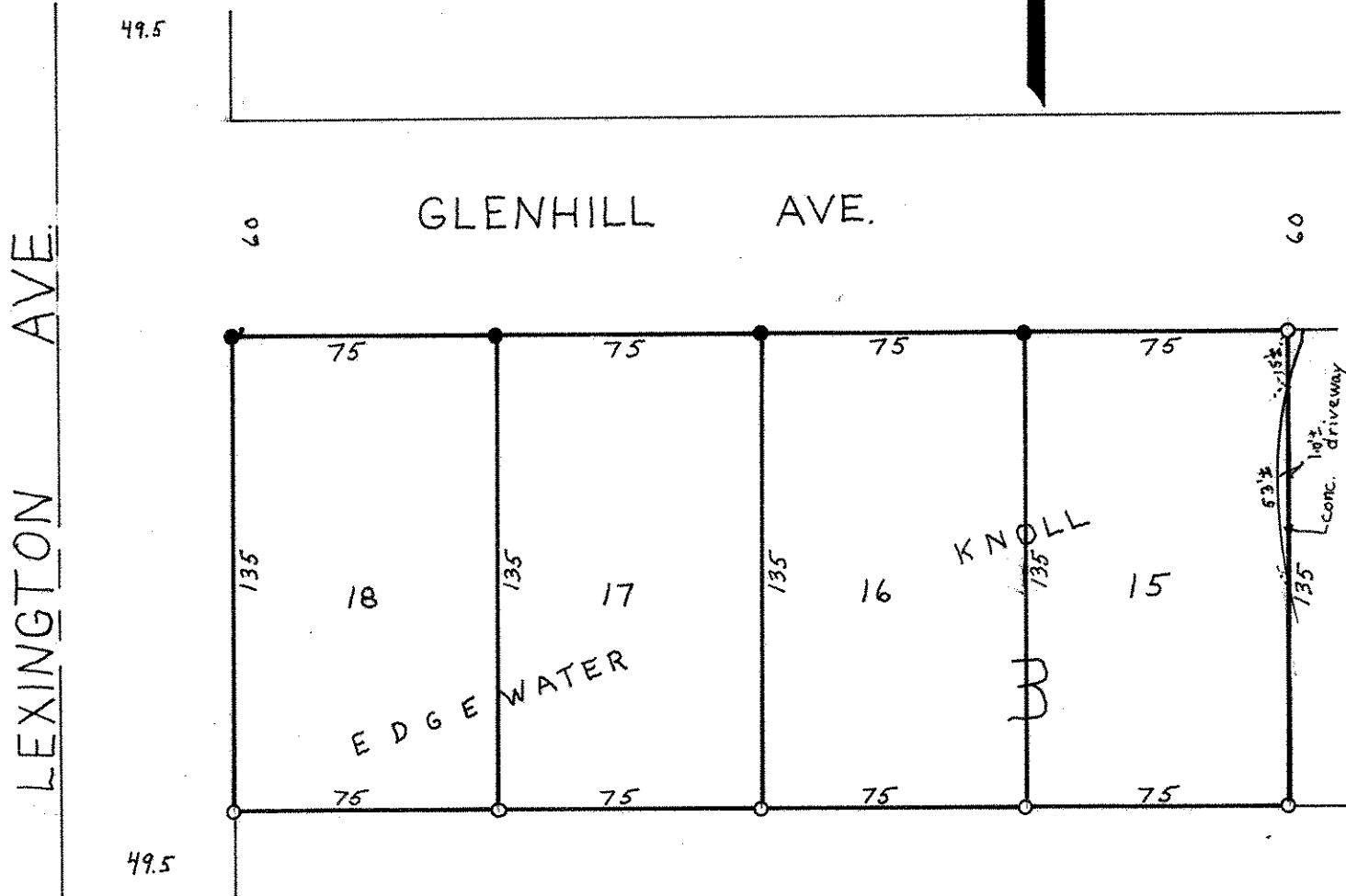
Date *April, 1972*

Scale *1" = 50'*

By *Charles O. Georgi*  
REGISTERED LAND SURVEYOR

**Description:**

Lots 15, 16, 17 and 18, Block 3,  
Edgewater Knoll,  
Ramsey County, Minnesota



○ Denotes Iron Pipe Monument  
● Denotes Iron Pipe Monument Found In Place