

FROM THE OFFICE OF

CHARLES O. GEORGI COMPANY

2215 West County Road B

Saint Paul, Minnesota 55113

REGISTERED CIVIL ENGINEER AND LAND SURVEYOR

Certificate of Survey

I Hereby Certify that this plat shows a survey made by me of the property described on this plat, and that the corners are correctly placed as shown, and that all locations have been correctly shown.

Surveyed For *Wm Farnell*

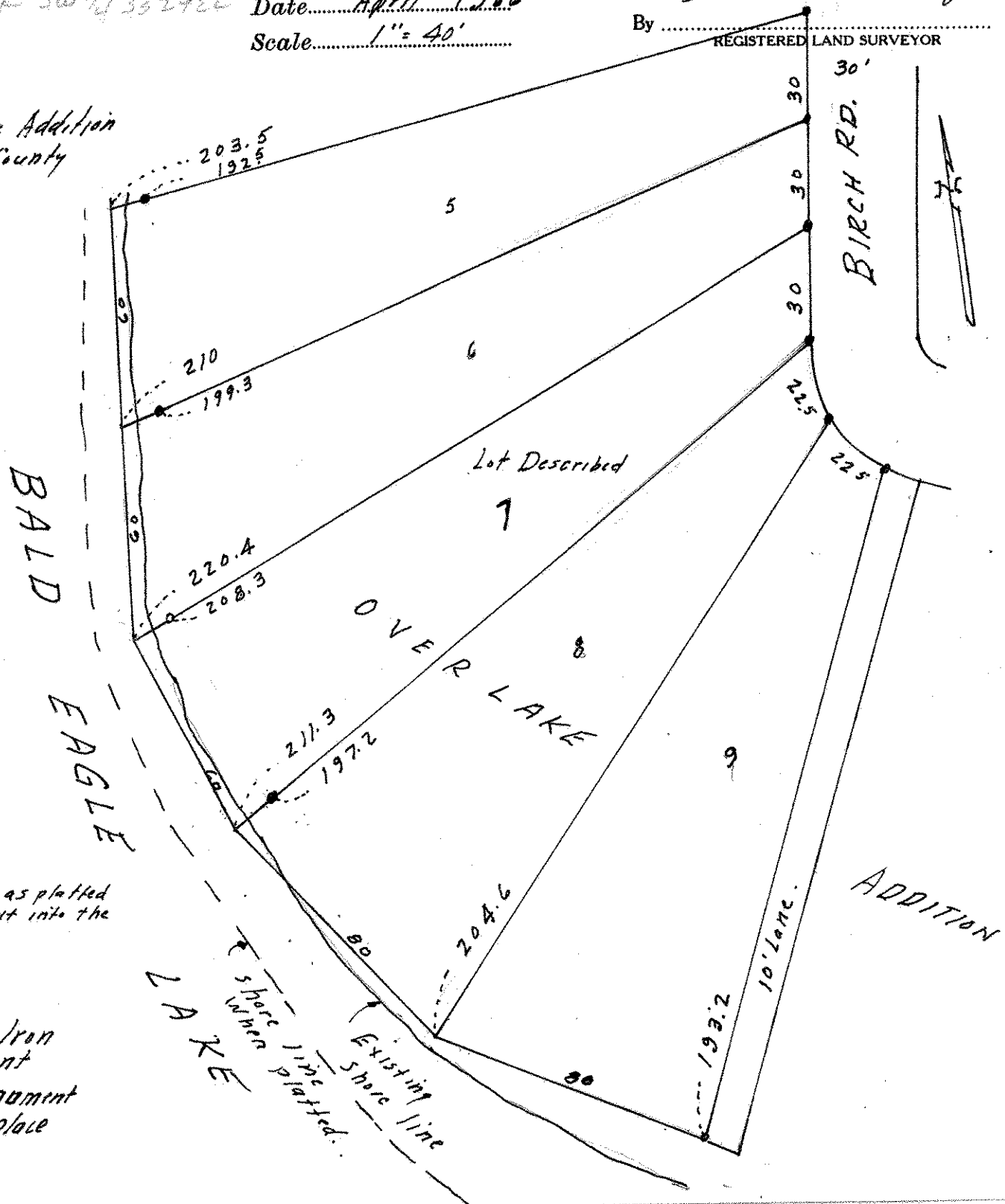
Date *April 1966*

Scale *1" = 40'*

By *Charles O. Georgi*
REGISTERED LAND SURVEYOR

Description:

*Lot 7
Over Lake Addition
Ramsey County
Minn.*



Note:
The lot line as platted
for Lot 7 is out into the
lake.

- o Denotes Iron Monument
- Iron Monument found in place