

FROM THE OFFICE OF

CHARLES O. GEORGI COMPANY

2215 West County Road B Saint Paul, Minnesota 55113
REGISTERED CIVIL ENGINEER AND LAND SURVEYOR

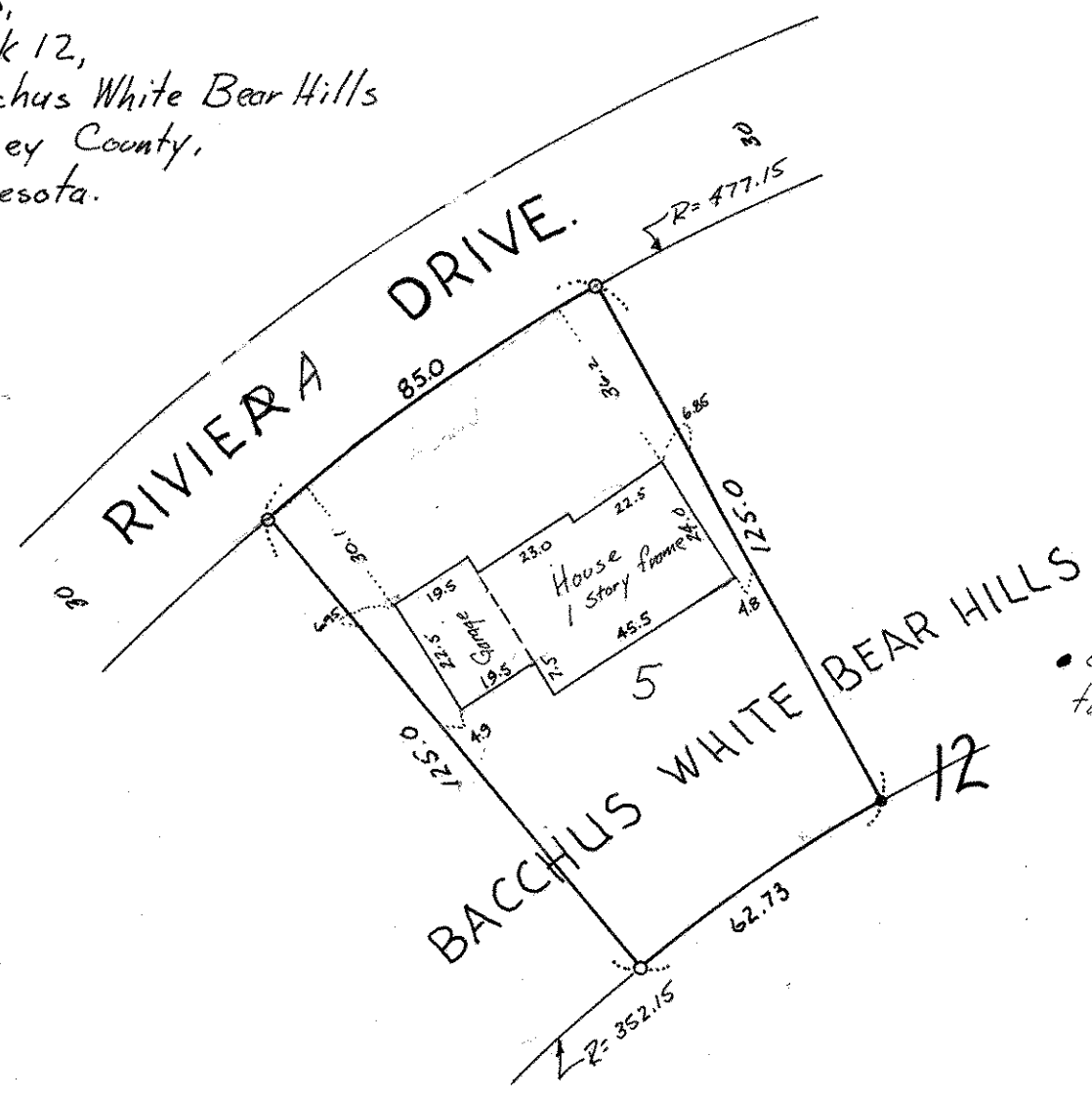
Certificate of Survey

I Herely Certify that this plat shows a survey made by me of the property described on this plat, and that the corners are correctly placed as shown, and that all locations have been correctly shown.

Surveyed For Raymond Vennewitz
Date July 1974
Scale 1" = 40'

By Charles O. Georgi
REGISTERED LAND SURVEYOR

Description:
Lot 5,
Block 12,
Bacchus White Bear Hills
Ramsey County,
Minnesota.



o denotes iron monument
● denotes iron monument found in place