

FROM THE OFFICE OF

# CHARLES O. GEORGI COMPANY

2215 West County Road B

Saint Paul, Minnesota 55113

REGISTERED CIVIL ENGINEER AND LAND SURVEYOR

## Certificate of Survey

I Hereby Certify that this plat shows a survey made by me of the property described on this plat, and that the corners are correctly placed as shown, and that all locations have been correctly shown.

Surveyed For St. J. Construction

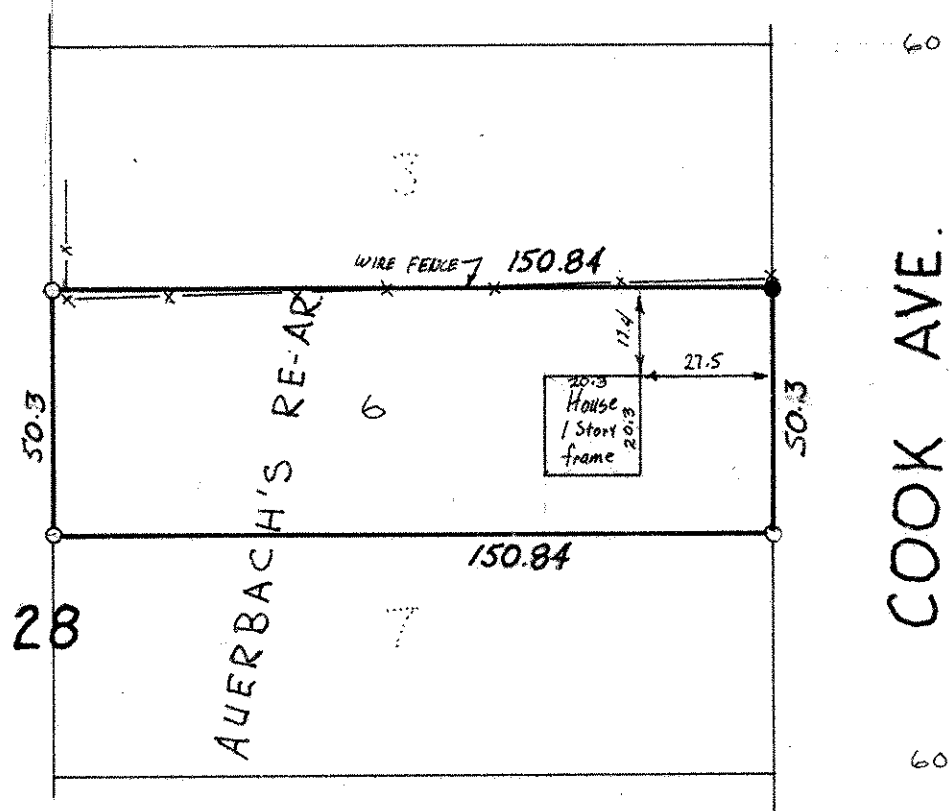
Date March 10, 1976

Scale 1"=40'

By Donald W. Schmidt  
REGISTERED LAND SURVEYOR

**Description:**

Lot 6,  
Block 28,  
Auerbach's Rearrangement of  
part of White Bear,  
Ramsey County, Minnesota.



- o denotes iron pipe monument
- denotes iron monument found in place