

FROM THE OFFICE OF

CHARLES O. GEORGI COMPANY

2215 West County Road B

Saint Paul, Minnesota 55113

REGISTERED CIVIL ENGINEER AND LAND SURVEYOR



I Hereby Certify that this plat shows a survey made by me of the property described on this plat, and that the corners are correctly placed as shown, and that all locations have been correctly shown.

10/6/75 Added Bldgs. C.O.G.

Surveyed For Lloyd Smith

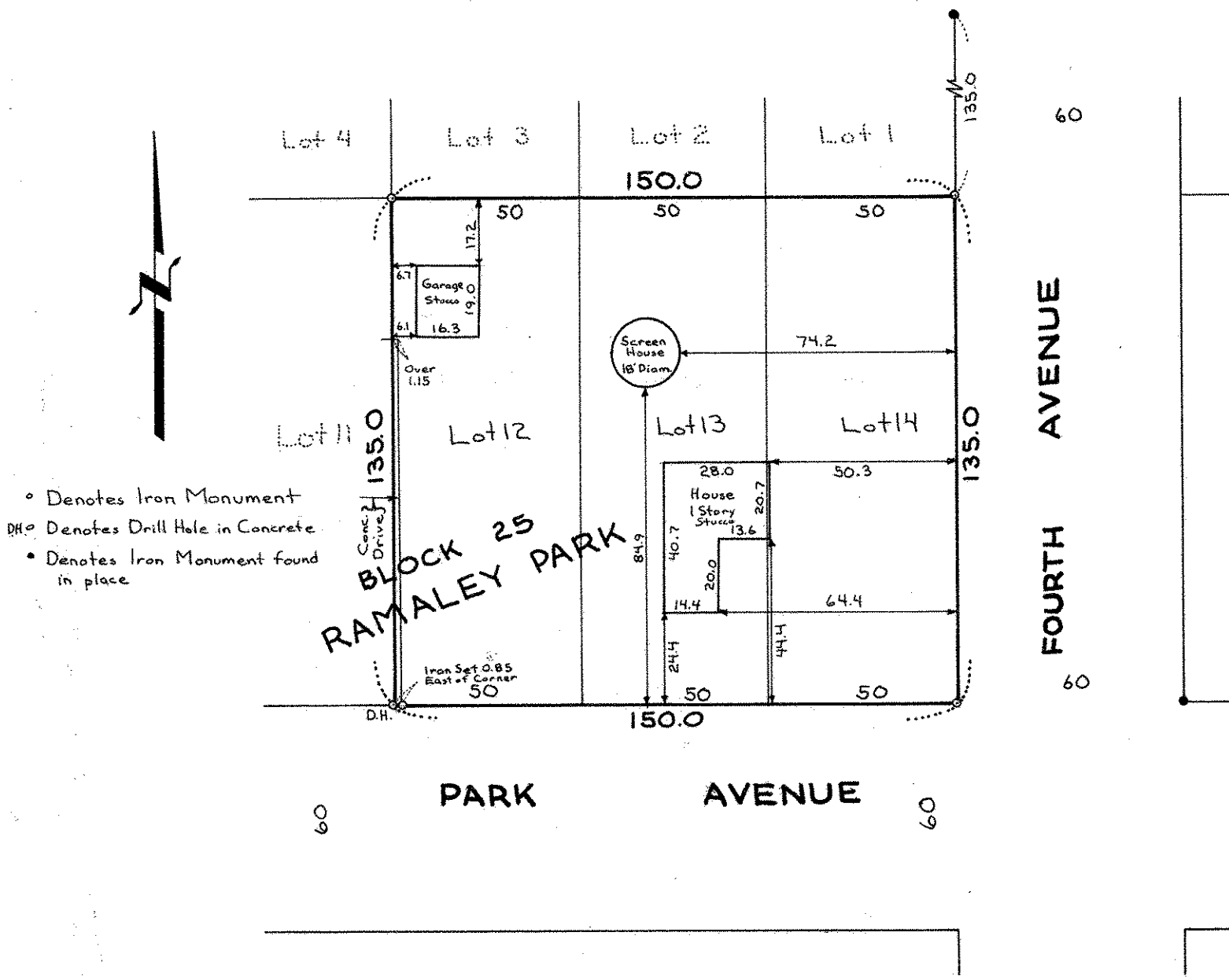
Date May 1975

Scale 1" = 40'

By Charles O. Georgi
REGISTERED LAND SURVEYOR

Description:

Lots 12, 13, and 14,
Block 25,
Ramaley Park,
Ramsey County, Minnesota



- Denotes Iron Monument
- D.H. Denotes Drill Hole in Concrete.
- Denotes Iron Monument found in place