

FROM THE OFFICE OF

# CHARLES O. GEORGI COMPANY

2215 West County Road B

Saint Paul, Minnesota 55113

REGISTERED CIVIL ENGINEER AND LAND SURVEYOR



## Certificate of Survey

I Hereby Certify that this plat shows a survey made by me of the property described on this plat, and that the corners are correctly placed as shown, and that all locations have been correctly shown. *Corners replaced in 1966*

Surveyed For *Mel. Hiner*

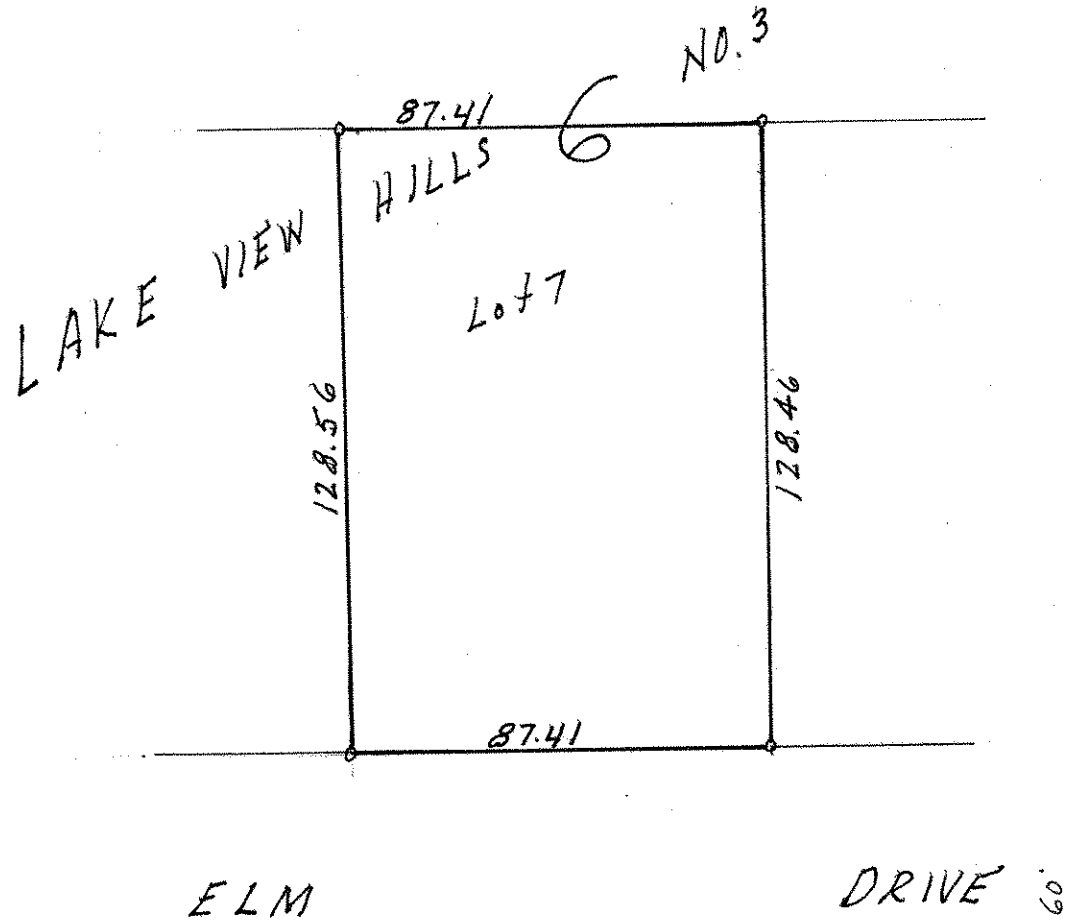
Date *June 1969*

Scale *1" = 40'*

By *Charles O. Georgi*  
REGISTERED LAND SURVEYOR

**Description:**

*Lot 7,  
Block 6  
Lake View Hills No 3  
Ramsey County, Minn*



o Denotes Iron Monument.