

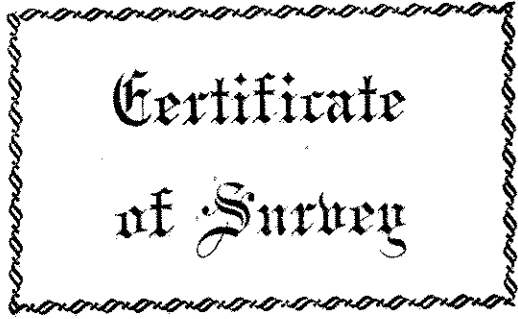
FROM THE OFFICE OF

CHARLES O. GEORGI COMPANY

2215 West County Road B

Saint Paul 13, Minnesota

REGISTERED CIVIL ENGINEER AND LAND SURVEYOR



Certificate of Survey

I Hereby Certify that this plat shows a survey made by me of the property described on this plat, and that the corners are correctly placed as shown, and that all locations have been correctly shown.

Surveyed For E. J. Morency

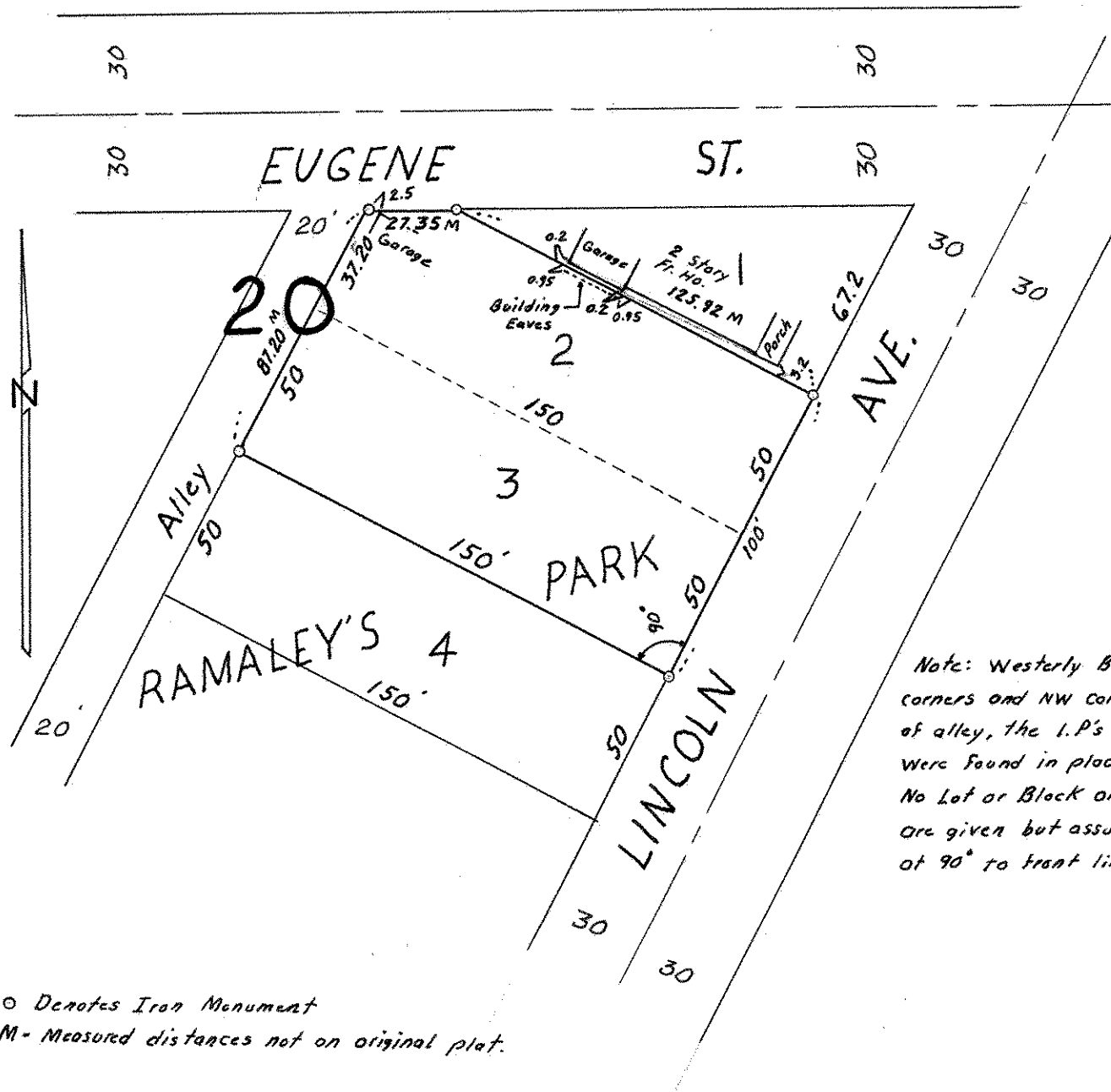
Date Oct 63

Scale 1" = 50'

By _____
REGISTERED LAND SURVEYOR

Description:

Lot 2 and 3
Block 20
Ramaley's Park



○ Denotes Iron Monument
M - Measured distances not on original plat.