


FROM THE OFFICE OF

**CHARLES O. GEORGI COMPANY**

2215 West County Road B

Saint Paul, Minnesota 55113

REGISTERED CIVIL ENGINEER AND LAND SURVEYOR

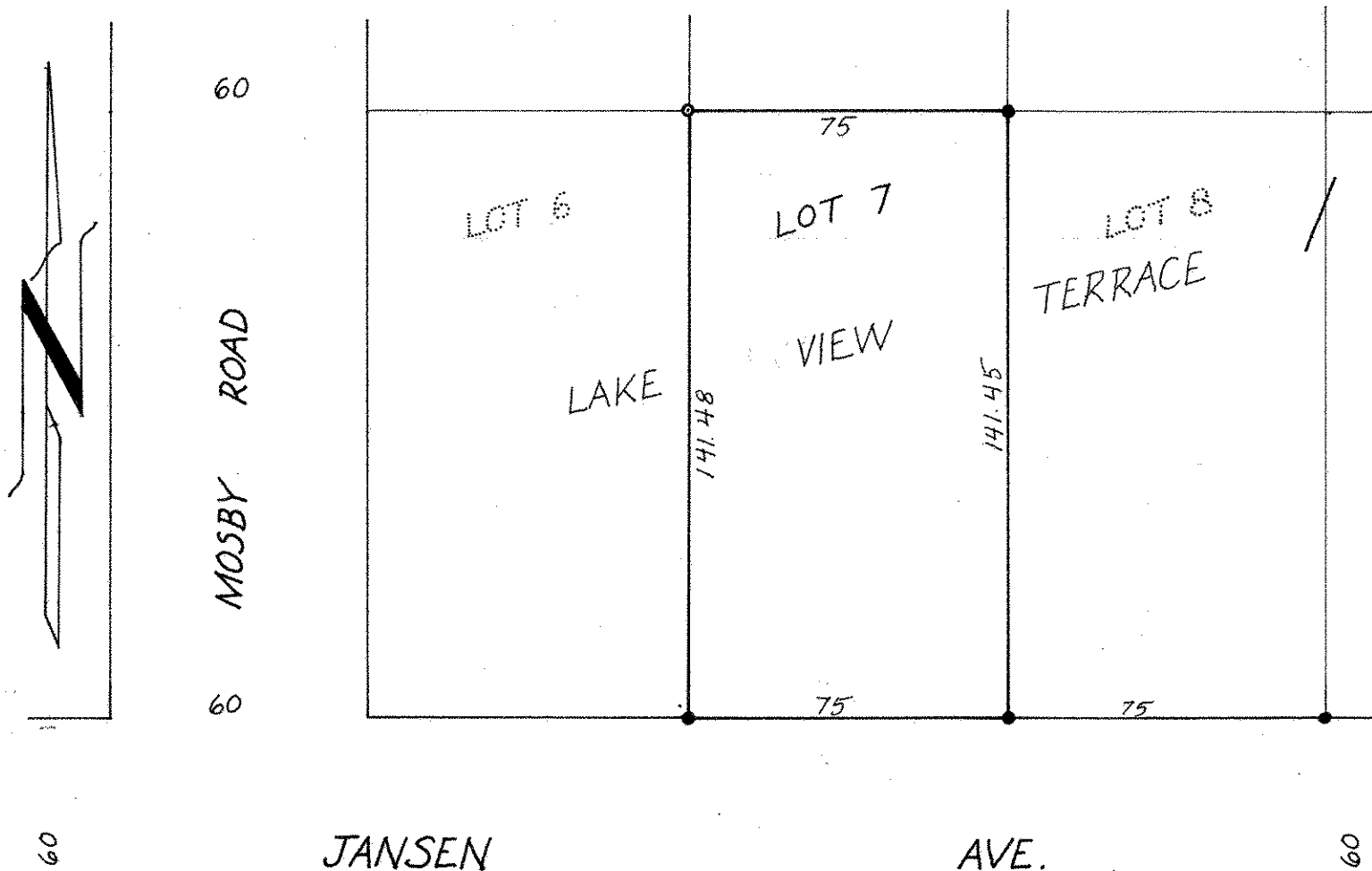


# Certificate of Survey

I Hereby Certify that this plat shows a survey made by me of the property described on this plat, and that the corners are correctly placed as shown, and that all locations have been correctly shown.

Surveyed For *Mutual Contractors Inc.*Date *May, 1971*Scale *1" = 40'*By *Charles O. Georgi*  
REGISTERED LAND SURVEYOR**Description:**

Lot 7, Block 1, Lake View Terrace,  
Ramsey County, Minnesota.



- Denotes Iron Pipe Monument
- Denotes Iron Pipe Monument found in place