

FROM THE OFFICE OF

CHARLES O. GEORGI COMPANY

2215 West County Road B

Saint Paul, Minnesota 55113

REGISTERED CIVIL ENGINEER AND LAND SURVEYOR



I Hereby Certify that this plat shows a survey made by me of the property described on this plat, and that the corners are correctly placed as shown, and that all locations have been correctly shown.

Surveyed For... JOHN MAMPLE

Date... MAY 1973

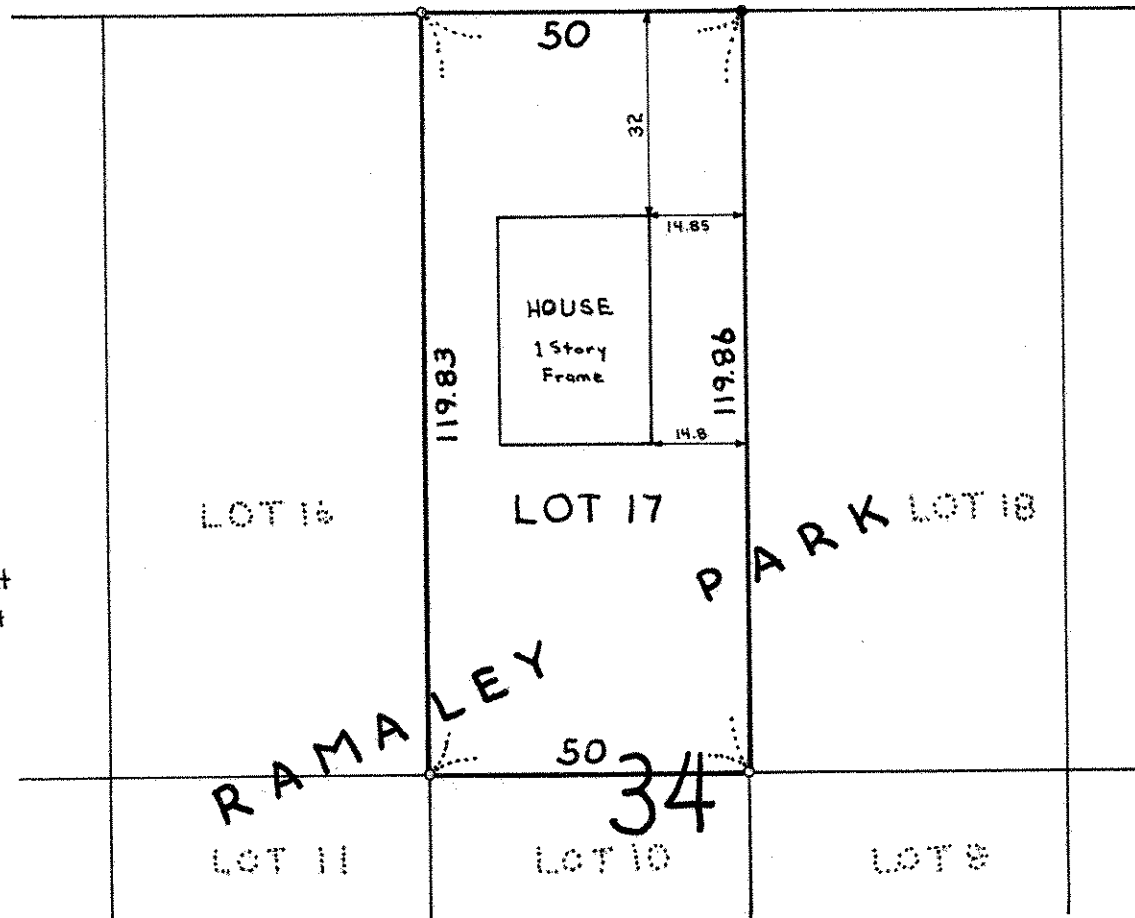
Scale... 1" = 30'

By Charles O. Georgi
REGISTERED LAND SURVEYOR

Description:

LOT 17,
BLOCK 34,
RAMALEY PARK,
RAMSEY COUNTY,
MINNESOTA

09 HINCKLEY AVE. 09



- Denotes Iron Pipe Monument
- Denotes Iron Pipe Monument found in place