

FROM THE OFFICE OF NE 11 30 22

# CHARLES O. GEORGI COMPANY

2215 West County Road B

Saint Paul 13, Minnesota

REGISTERED CIVIL ENGINEER AND LAND SURVEYOR

## Certificate of Survey

I Hereby Certify that this plat shows a survey made by me of the property described on this plat, and that the corners are correctly placed as shown, and that all locations have been correctly shown.

Richard Roeder

Surveyed For O. E. Roeder

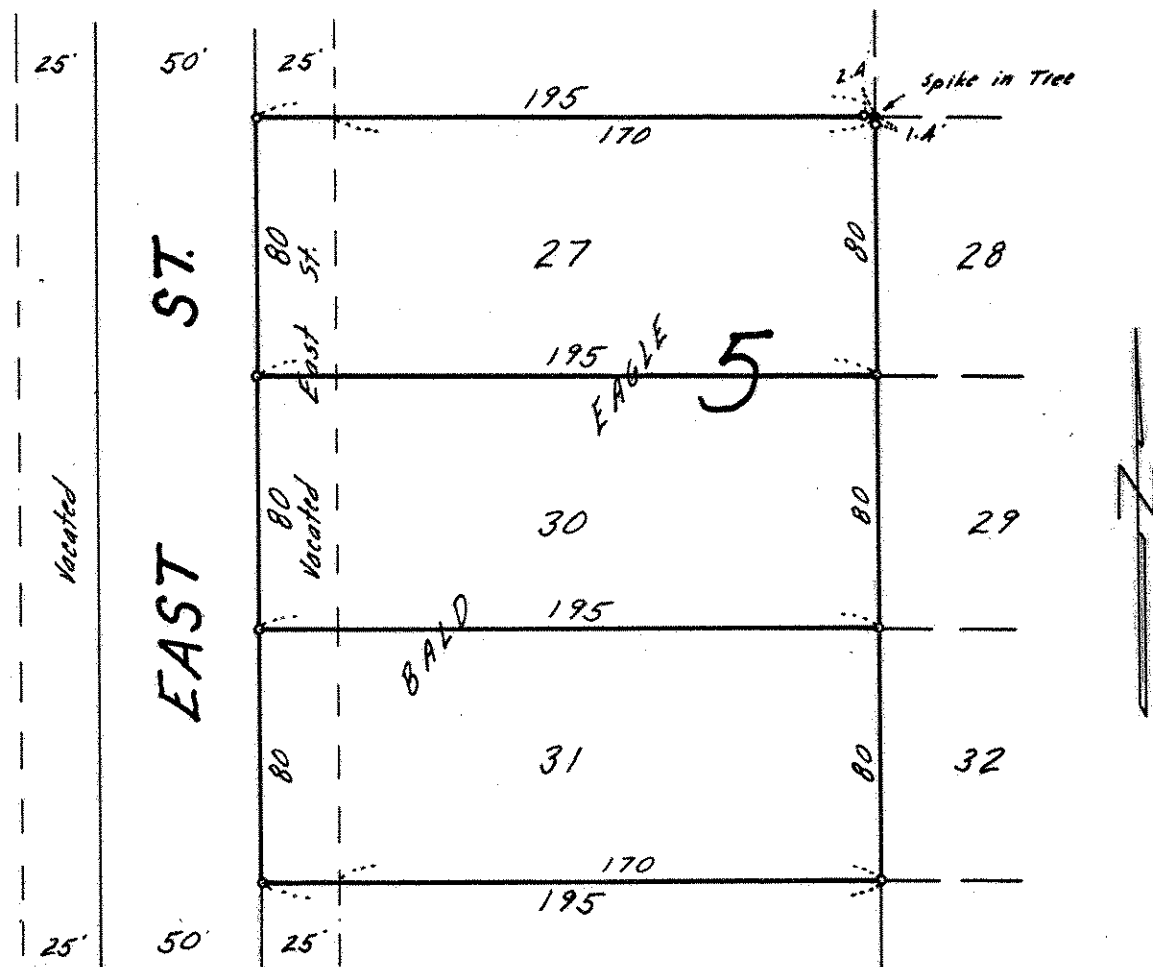
Date Sept. 1965

Scale 1" = 60'

By Charles O. Georgi  
REGISTERED LAND SURVEYOR

### Description:

Lots 27, 30 and 31, Block 5, Bald Eagle (Town of Bald Eagle),  
and the Easterly 25 feet of East St. as vacated.



o Denotes Iron Monument