

FROM THE OFFICE OF

CHARLES O. GEORGI COMPANY

2215 West County Road B

Saint Paul 8, Minnesota

MINNESOTA REGISTERED LAND SURVEYOR

Certificate of Survey

I Hereby Certify that this plat shows a survey made by me of the property described on this plat, and that the corners are correctly placed as shown, and that all locations, encroachments, etc., have been correctly shown.

The land shown and described hereon is acceptable and useable for residential purposes from an engineering standard.

Surveyed For SCHULER CONST. INC.
Date January 1965
Scale 1"=100'

By Charles O. Georgi
REGISTERED LAND SURVEYOR & Civil Engineer.
Minn. Cert. - No 3960

PROPOSED PLANNED DEVELOPMENT OF BEL-AIR HILLS

OWNER:
Schuler Const. Co.
3667 Bellaire Ave
White Bear Lake, Minn

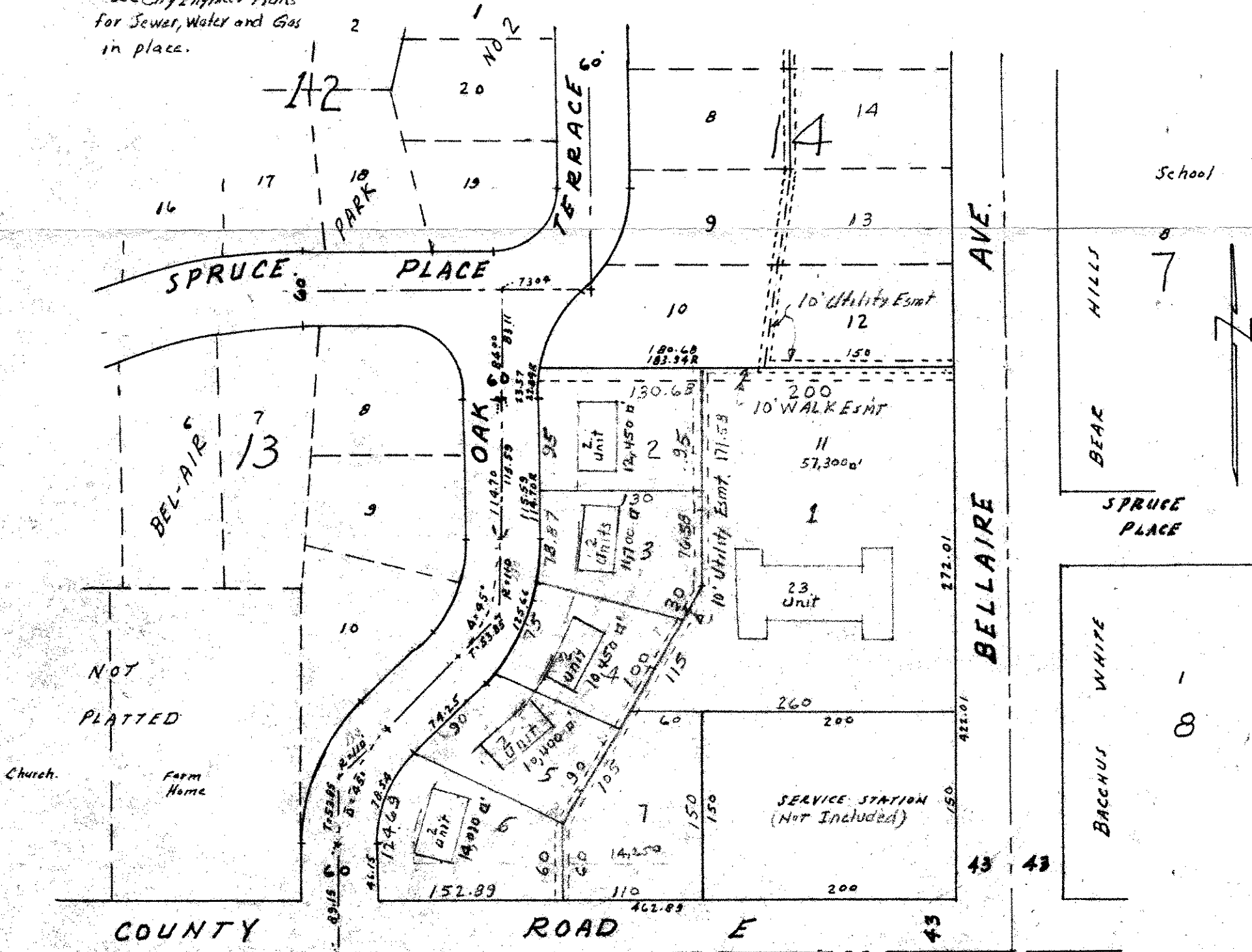
Description:
Lot 11, Block 14, BEL-AIR PARK NO 2
except the South 150 feet of the East
200 feet thereof. 130,560 Sq.Ft. = 3.00 Acres.

Dedications:
No new streets
provide 10' Walk and Utility Esmts

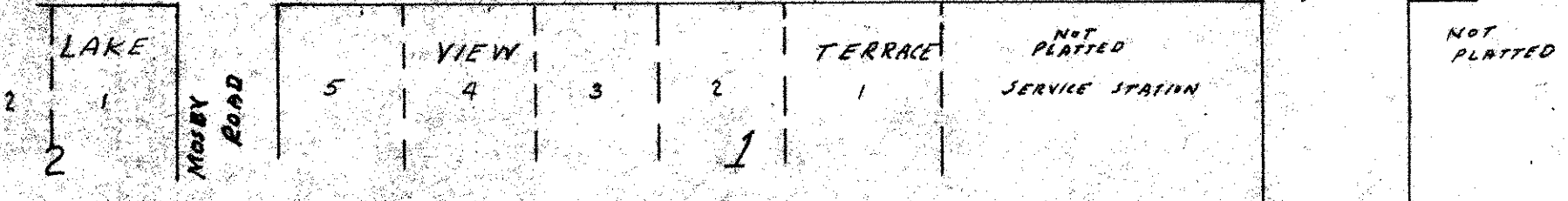
Utilities:
See City Engineer Plans
for Sewer, Water and Gas
in place.

LOTS:
Approx sizes and areas are
as shown.

DRAINAGE:
Very good to West and to South.
Contours are shown on Preliminary Plat.
of Bel-Aire Park No. 2.



STH No. 100 & 244



r - denoted original Recorded Data.