

SE 25 30 22

FROM THE OFFICE OF

# CHARLES O. GEORGI COMPANY

2215 West County Road B

Saint Paul, Minnesota 55113

REGISTERED CIVIL ENGINEER AND LAND SURVEYOR

## Certificate of Survey

I Hereby Certify that this plat shows a survey made by me of the property described on this plat, and that the corners are correctly placed as shown, and that all locations have been correctly shown.

Surveyed For Al Rames

Date August 1974

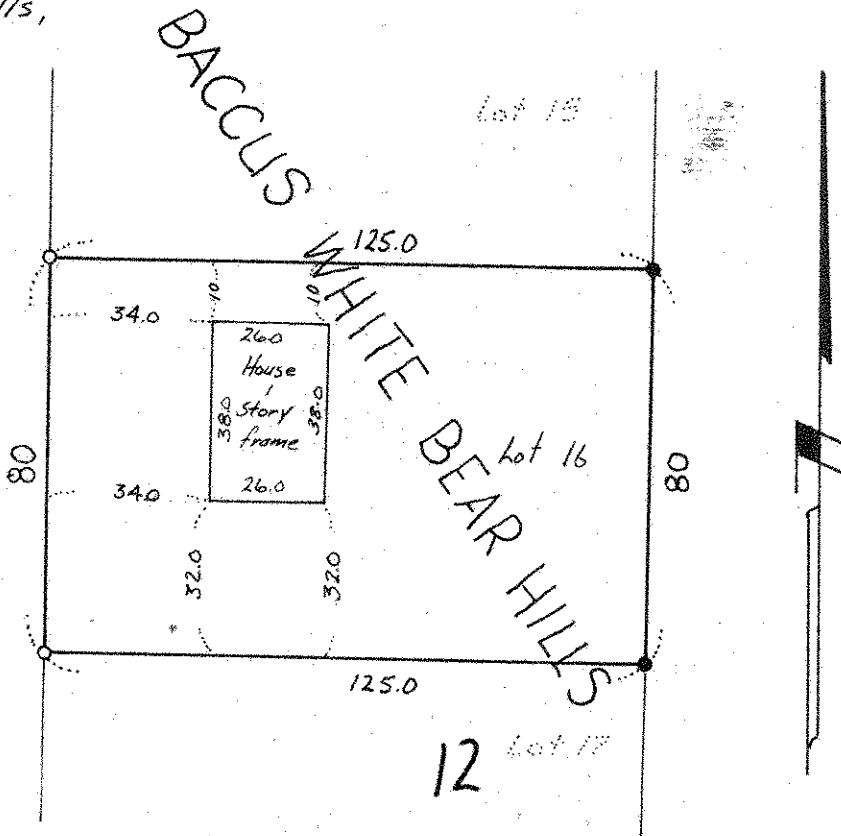
Scale 1" = 40'

By Charles O. Georgi  
REGISTERED LAND SURVEYOR

### Description:

Lot 16,  
Block 12,  
Bacchus White Bear Hills,  
Ramsey County,  
Minnesota.

ROLLING VIEW DRIVE 60



o denotes iron monument.  
• denotes iron monument  
found in place.