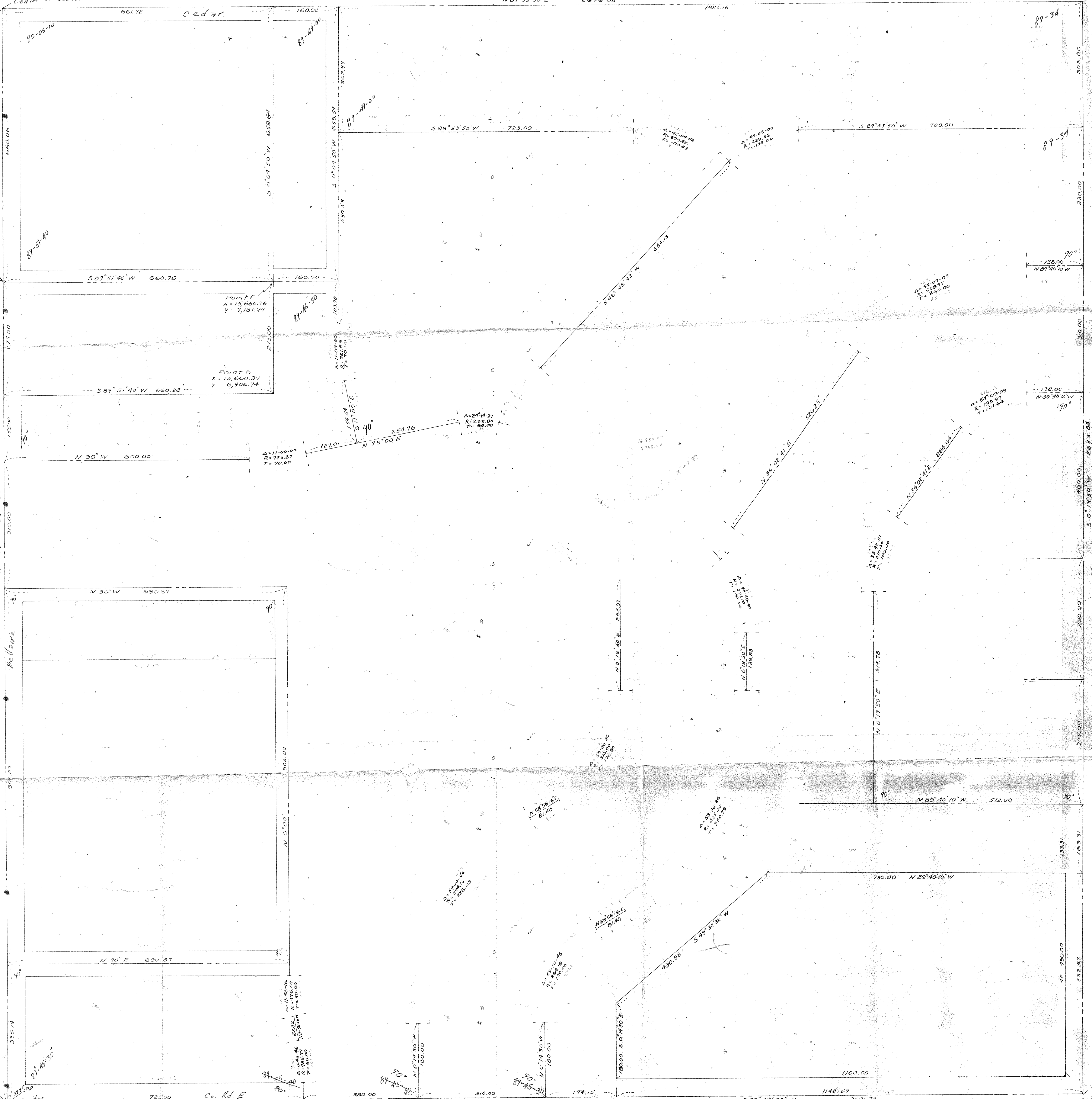


NW 131.74 Ho FdH.
NE 37.56 Fe Post
E 74.70 15" E
SE 44.08 PP
SW 116.43 Ho FdH.

Point B
X = 15,000.00
Y = 7,040.14

Point E
X = 15,661.72
Y = 7,241.38

SE 47.68 C.M.V.
NW 67.33 PP
NE 61.38 6" A
SW 120.78 36" C.T.W.D.
Point C
X = 17,646.89
Y = 7,044.74



Fd. Iron Rod
on N

Point H
X = 15,000.00
Y = 6,905.14

Point F
X = 15,660.76
Y = 7,181.74

Point G
X = 15,660.37
Y = 6,946.74

Pol. on H(1)
E 21.03 sign
NW 91.78 sign

Point A
X = 15,000.00
Y = 5,000.00

Point D
X = 17,631.69
Y = 5,211.10

45° 24' 30"
45.5
f = C.A.E.
C=2174.537
1/30 = 2/288
x = 2182 = 2/30

Bt on E
NW 86.4 10" B
NW 41.5 10" C
SW 60.25 TP

NE 39.35 PP
SE 75.05 PP
SW 100.65 TP
SW 35.36 G.P.?