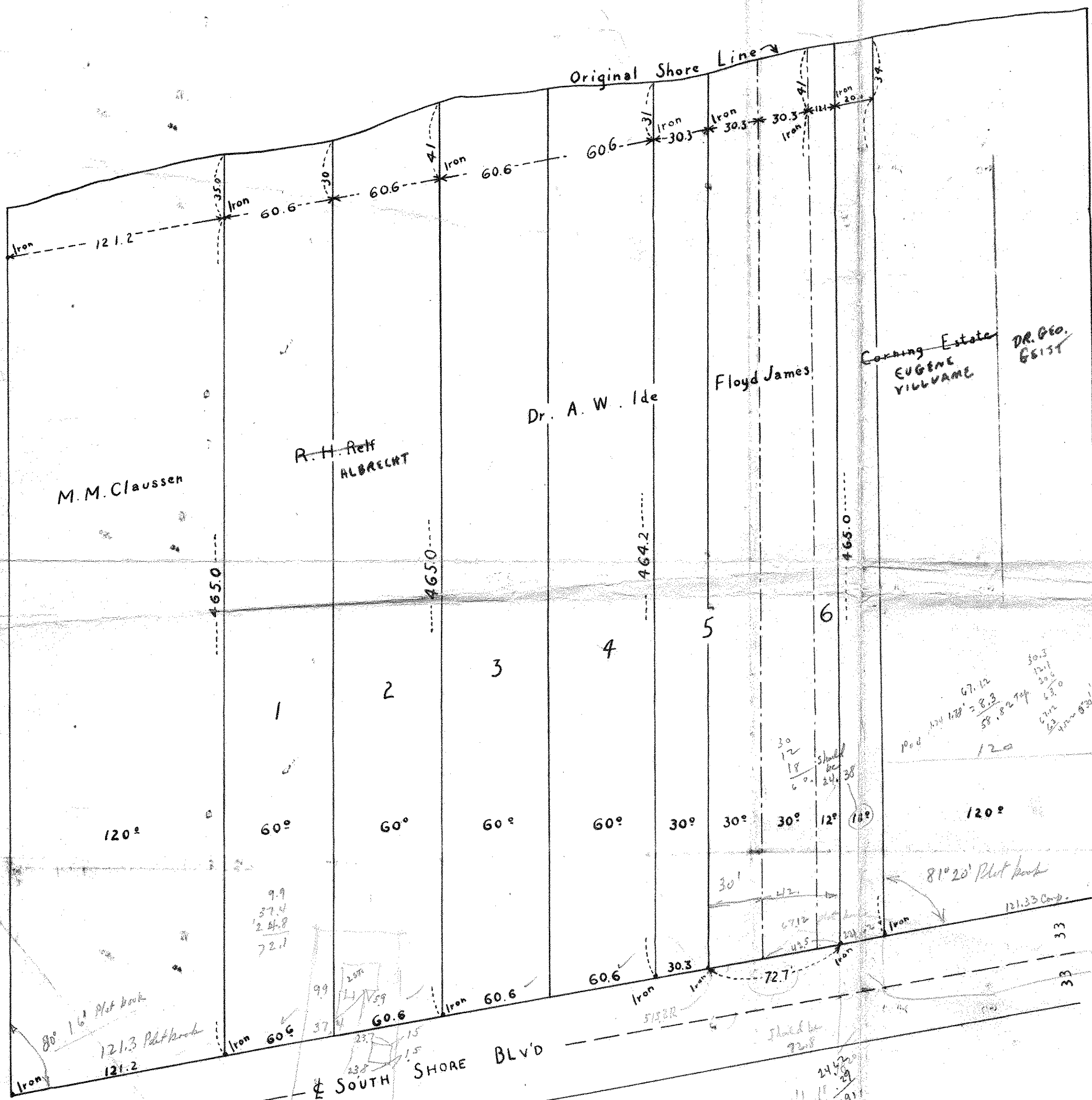


WHITE BEAR LAKE

BELLAIRE

Present Shore Line

Original Shore Line



SURVEY OF
PORTIONS OF LOTS 5 & 6, BLOCK 3.
GOVT. LOT 2, SEC. 24, T.30N, R.22W.

BELLAIRE

WHITE BEAR LAKE, RAMSEY COUNTY, MINN.

Surveyed by F. T. Howes, May 8, 1937

Scale, 1" = 50'

