

SW 19 30 27

FROM THE OFFICE OF

# CHARLES O. GEORGI COMPANY

2215 West County Road B

Saint Paul, Minnesota 55113

REGISTERED CIVIL ENGINEER AND LAND SURVEYOR

## Certificate of Survey

I Hereby Certify that this plat shows a survey made by me of the property described on this plat, and that the corners are correctly placed as shown, and that all locations have been correctly shown.

Surveyed For Richard Grekoff

Date July 1975

Scale 1" = 40'

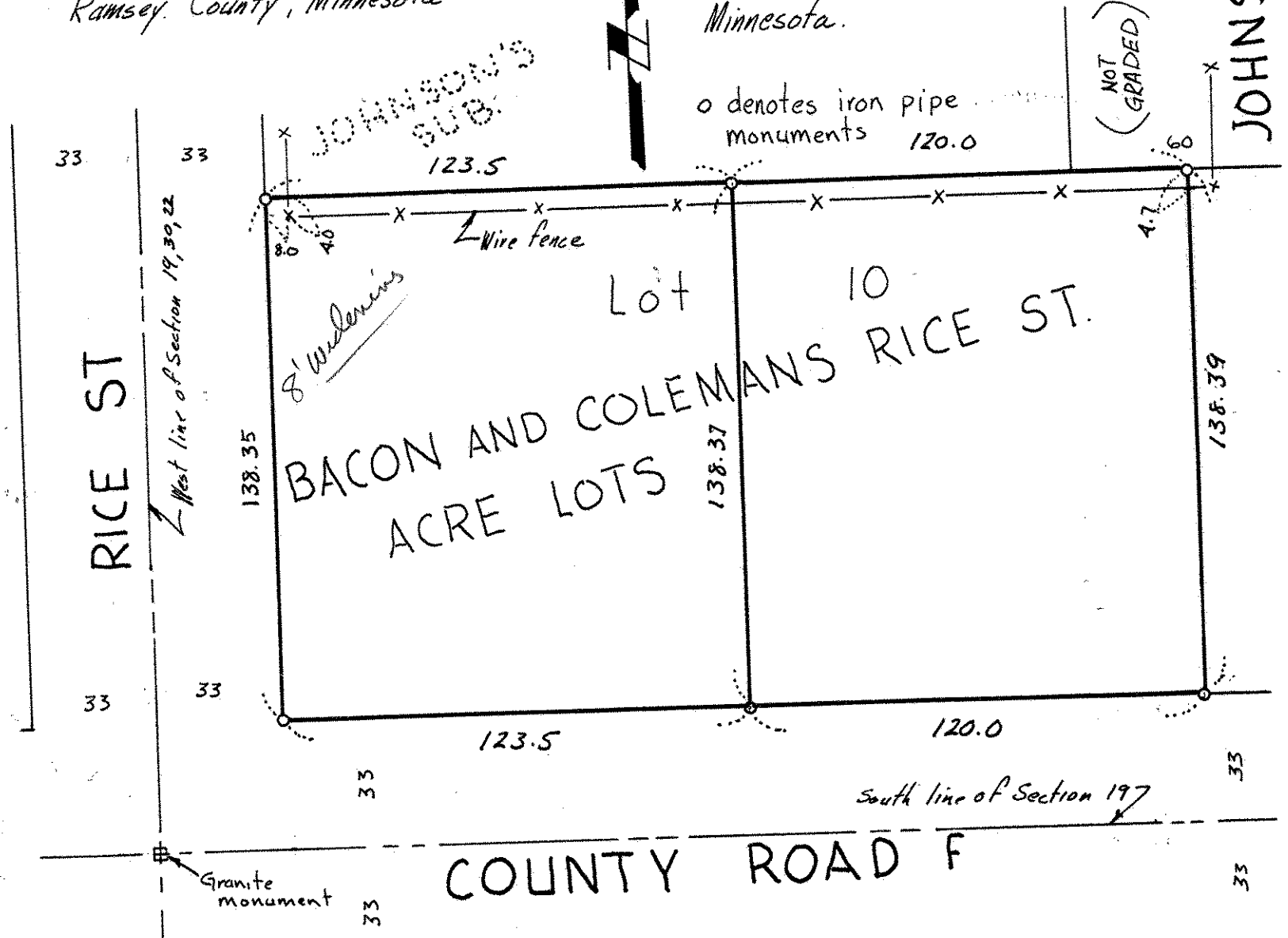
By Charles O. Georgi  
REGISTERED LAND SURVEYOR

### Description:

Lot 10, except the East 120.0 feet thereof, Block 3, Bacon and Colemans Rice St. Acre lots, Ramsey County, Minnesota

### Description

The East 120.0 feet of lot 10, Block 3, Bacon and Colemans Rice St. Acre lots, Ramsey County, Minnesota.



o denotes iron pipe monuments 120.0

(NOT GRADED)

Plat prorated north and south with section measurements; agrees with Johnson's Subdivision