

FROM THE OFFICE OF

**CHARLES O. GEORGI COMPANY**

2215 West County Road B

Saint Paul, Minnesota 55113

REGISTERED CIVIL ENGINEER AND LAND SURVEYOR

**Certificate  
of Survey**

I Hereby Certify that this plat shows a survey made by me of the property described on this plat, and that the corners are correctly placed as shown, and that all locations have been correctly shown.

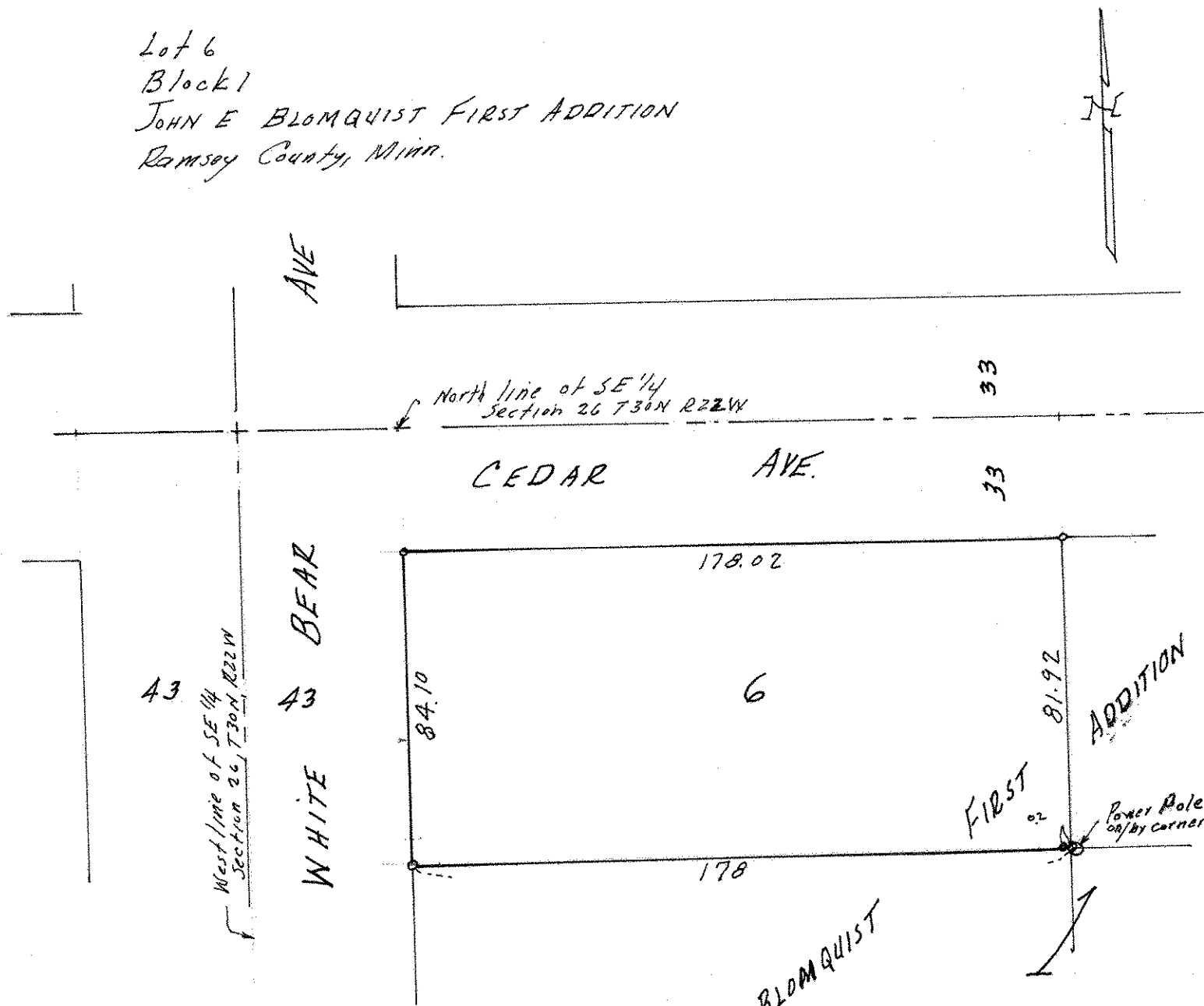
Surveyed For.....*Jane M. Burger*Date.....*August 1967*Scale.....*1" = 40'*

By.....

*Charles O. Georgi*  
REGISTERED LAND SURVEYOR

**Description:**

Lot 6  
Block 1  
JOHN E. BLOMQUIST FIRST ADDITION  
Ramsey County, Minn.



o Denotes Iron Pipe Monument.