

FROM THE OFFICE OF

CHARLES O. GEORGI COMPANY

2215 West County Road B

Saint Paul, Minnesota 55113

REGISTERED CIVIL ENGINEER AND LAND SURVEYOR

Certificate of Survey

I Hereby Certify that this plat shows a survey made by me of the property described on this plat, and that the corners are correctly placed as shown, and that all locations have been correctly shown.

City of White Bear Lake Lake; White Bear Lake

Surveyed For *Bob, Theme City Engineer*

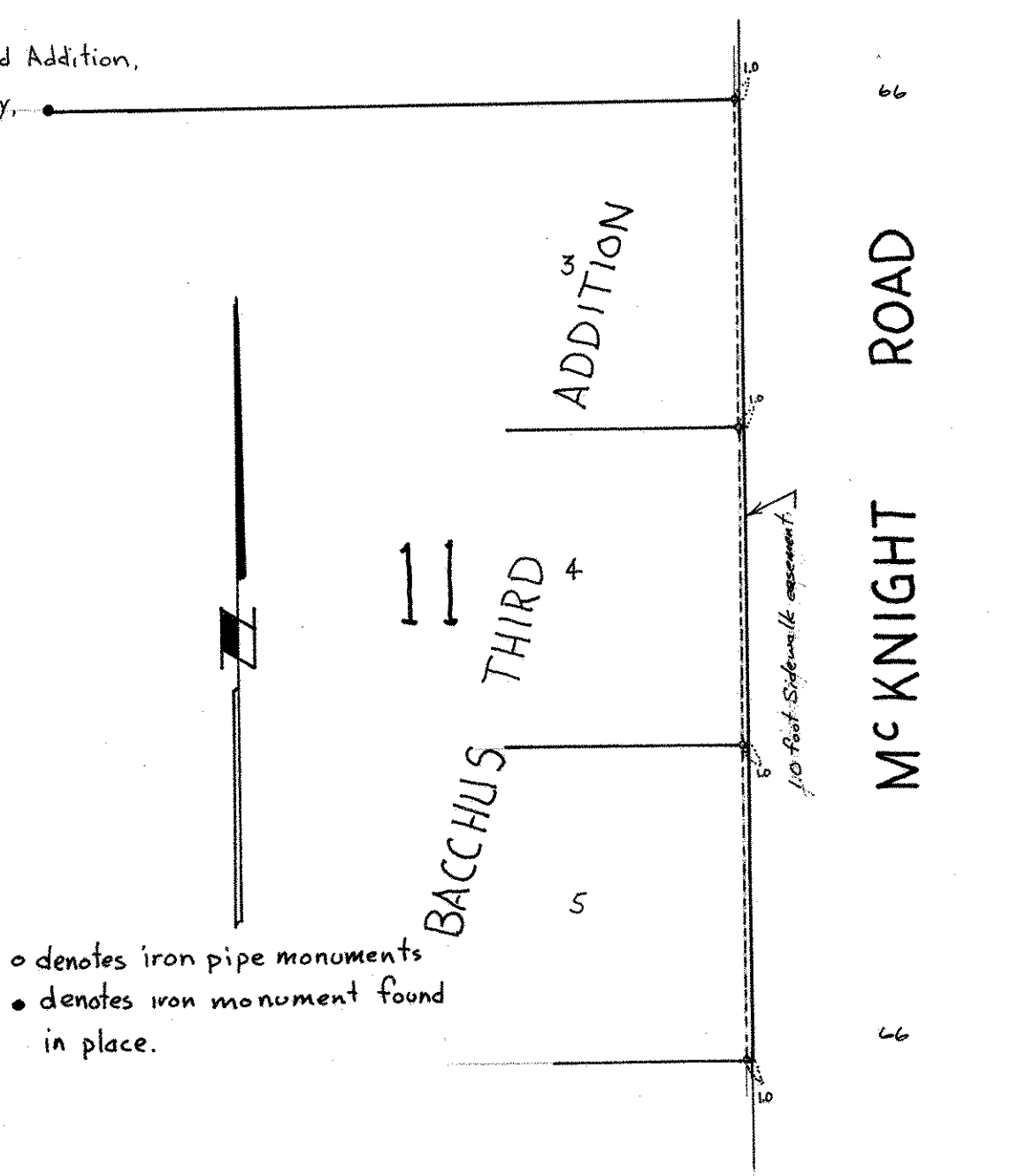
Date *April 1974*

Scale *1" = 40'*

By *Charles O. Georgi*
REGISTERED LAND SURVEYOR

Description:

Lots 3, 4 and 5,
Block 11,
Bacchus Third Addition,
Ramsey County,
Minnesota,



o denotes iron pipe monuments
● denotes iron monument found
in place.