

FROM THE OFFICE OF

CHARLES O. GEORGI COMPANY

2215 West County Road B

Saint Paul, Minnesota 55113

REGISTERED CIVIL ENGINEER AND LAND SURVEYOR



I Hereby Certify that this plat shows a survey made by me of the property described on this plat, and that the corners are correctly placed as shown, and that all locations have been correctly shown.

Surveyed For *Bernard Welch*

Date *July 1974*

Scale *1" = 40'*

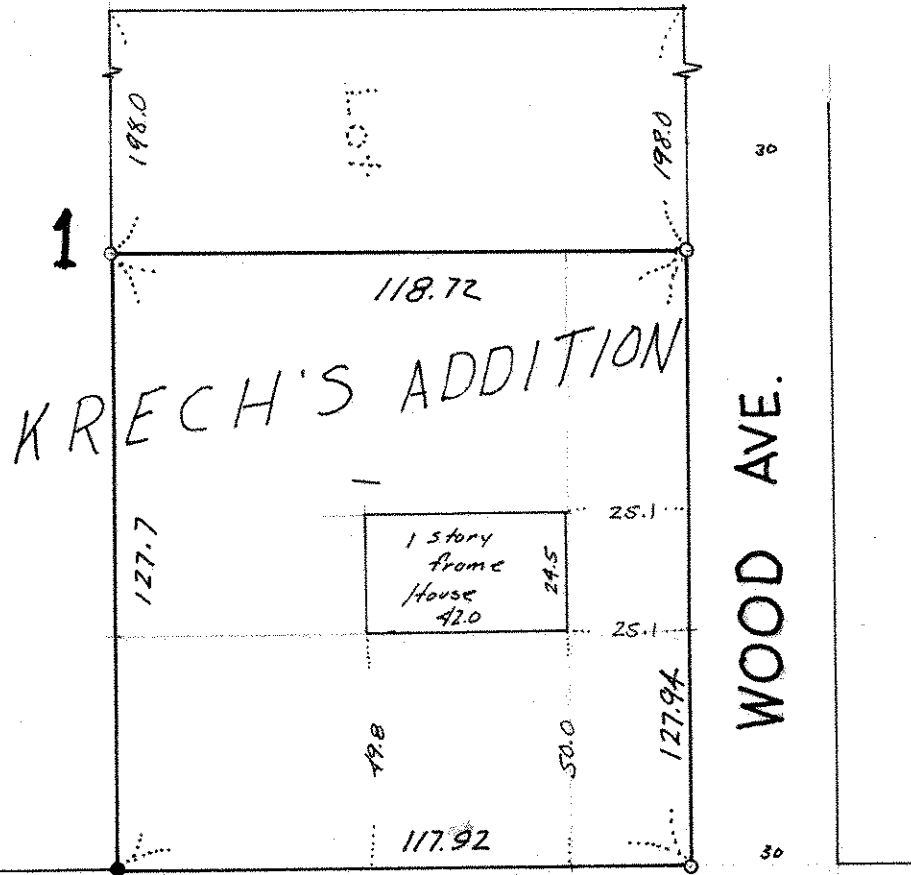
By *Donald W. Schmitt*
REGISTERED LAND SURVEYOR

Description:

*Lot 1, except the North 198.0 feet thereof
Block 1, Krech's Addition
Ramsey County, Minnesota.*

FIFTH ST.

*o denotes iron monument
• denotes iron monument
found in place.*



FOURTH ST.

60