

FROM THE OFFICE OF

**CHARLES O. GEORGI COMPANY**

2215 West County Road B

Saint Paul, Minnesota 55113

REGISTERED CIVIL ENGINEER AND LAND SURVEYOR

**Certificate  
of Survey**

I Hereby Certify that this plat shows a survey made by me of the property described on this plat, and that the corners are correctly placed as shown, and that all locations have been correctly shown.

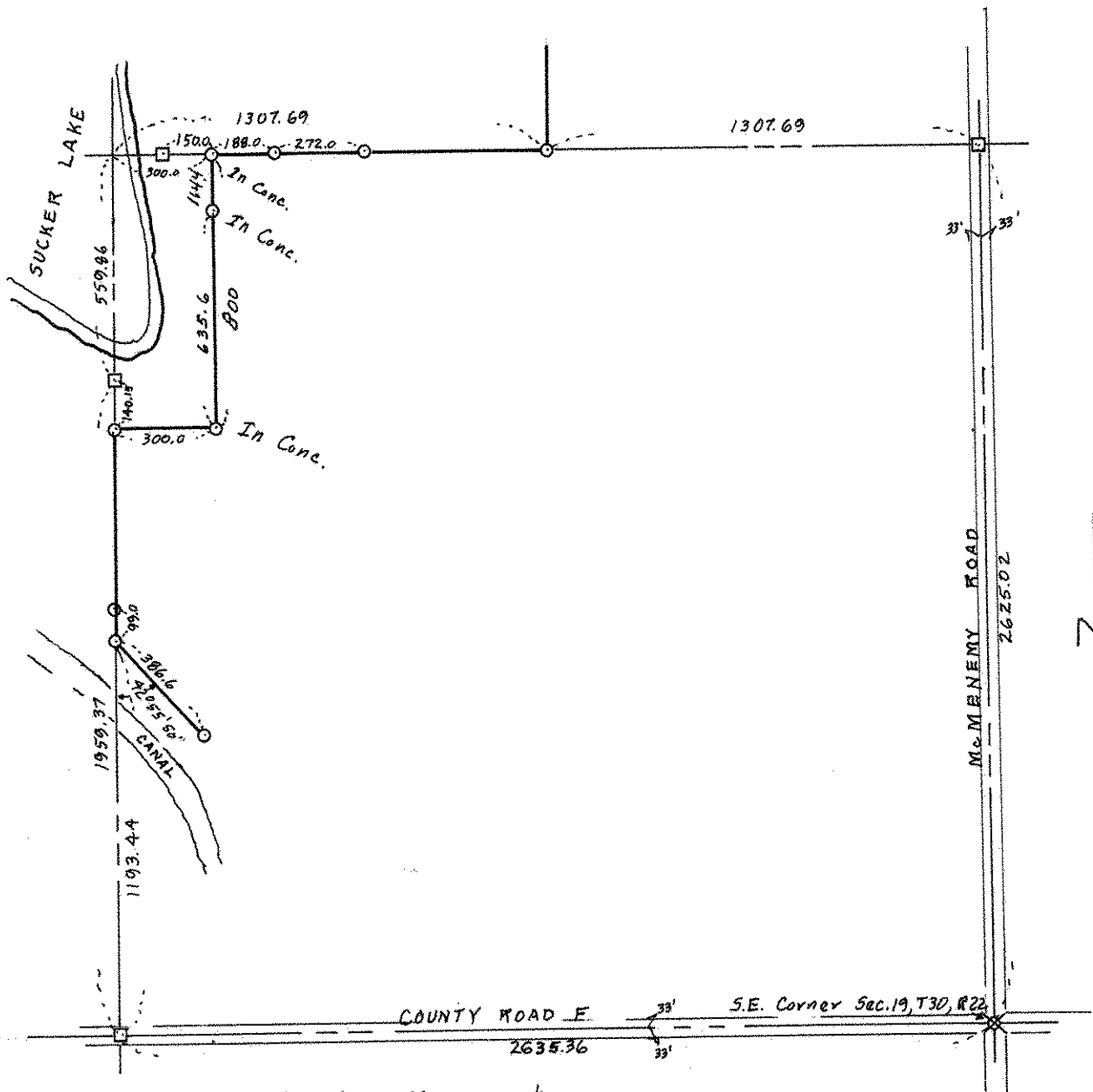
Surveyed For Water Department

Date August 1968

Scale 1" = 500'

By Charles O. Georgi  
REGISTERED LAND SURVEYOR

Description: Part of  
SW 1/4 Section 19, T30N, R22W



- Denotes Iron Monument
- Denotes Granite Monument
- \* Denotes Cast Iron Monument