

Certificate of Survey

From the office of
GEORGI-SCHMIDT & ASSOC. INC.
3092 No. Lexington Ave., Roseville, Mn. 55113
LAND SURVEYING
483-4408

I Hereby Certify that this plat shows a survey made by me of the property described on this plat, ~~and that the corners are correctly placed as shown,~~ and that all locations have been correctly shown.

Job Number: 716

Surveyed For Wayne Rodgers Homes Inc.

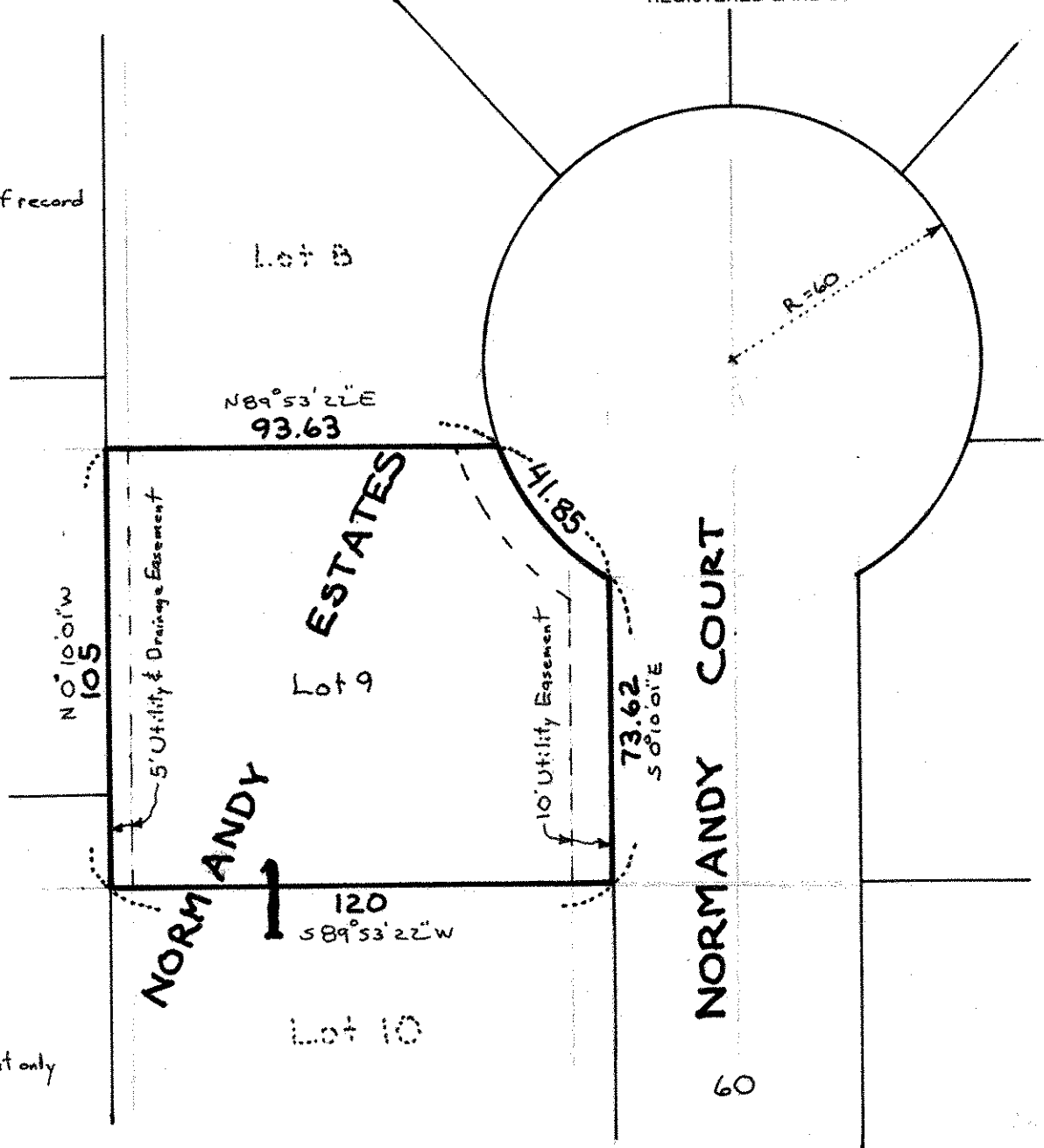
Date August, 1980

Scale 1"=400'

By Donald W. Schmidt
REGISTERED LAND SURVEYOR

Description:

Lot 9,
Block 1,
Normandy Estates,
Ramsey County, Minn.
Subject to easements of record



Easements as per plat only

60