

FROM THE OFFICE OF

# CHARLES O. GEORGI COMPANY

2215 West County Road B

Saint Paul, Minnesota 55113

REGISTERED CIVIL ENGINEER AND LAND SURVEYOR



*I Hereby Certify that this plat shows a survey made by me of the property described on this plat, and that the corners are correctly placed as shown, and that all locations have been correctly shown.*

Surveyed For *E. WALL*

Date *Jan. 1949*

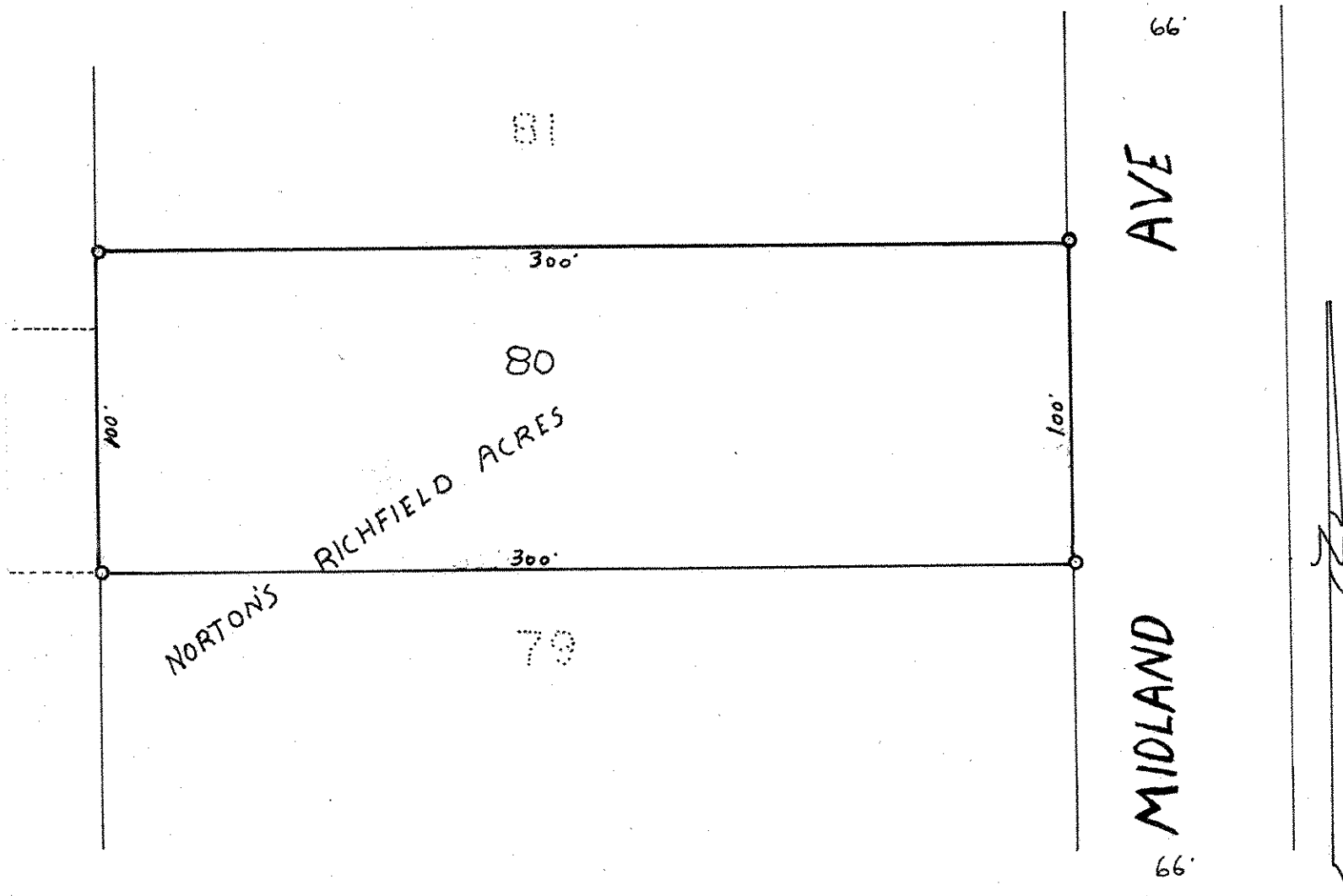
Scale *1" = 50'*

By *Charles O. Georgi*  
REGISTERED LAND SURVEYOR

**Description:**

Lot 80

Norton's Richfield Acres



○ Denotes Iron Monument