

FROM THE OFFICE OF

CHARLES O. GEORGI COMPANY

2215 West County Road B

Saint Paul 13, Minnesota

REGISTERED CIVIL ENGINEER AND LAND SURVEYOR



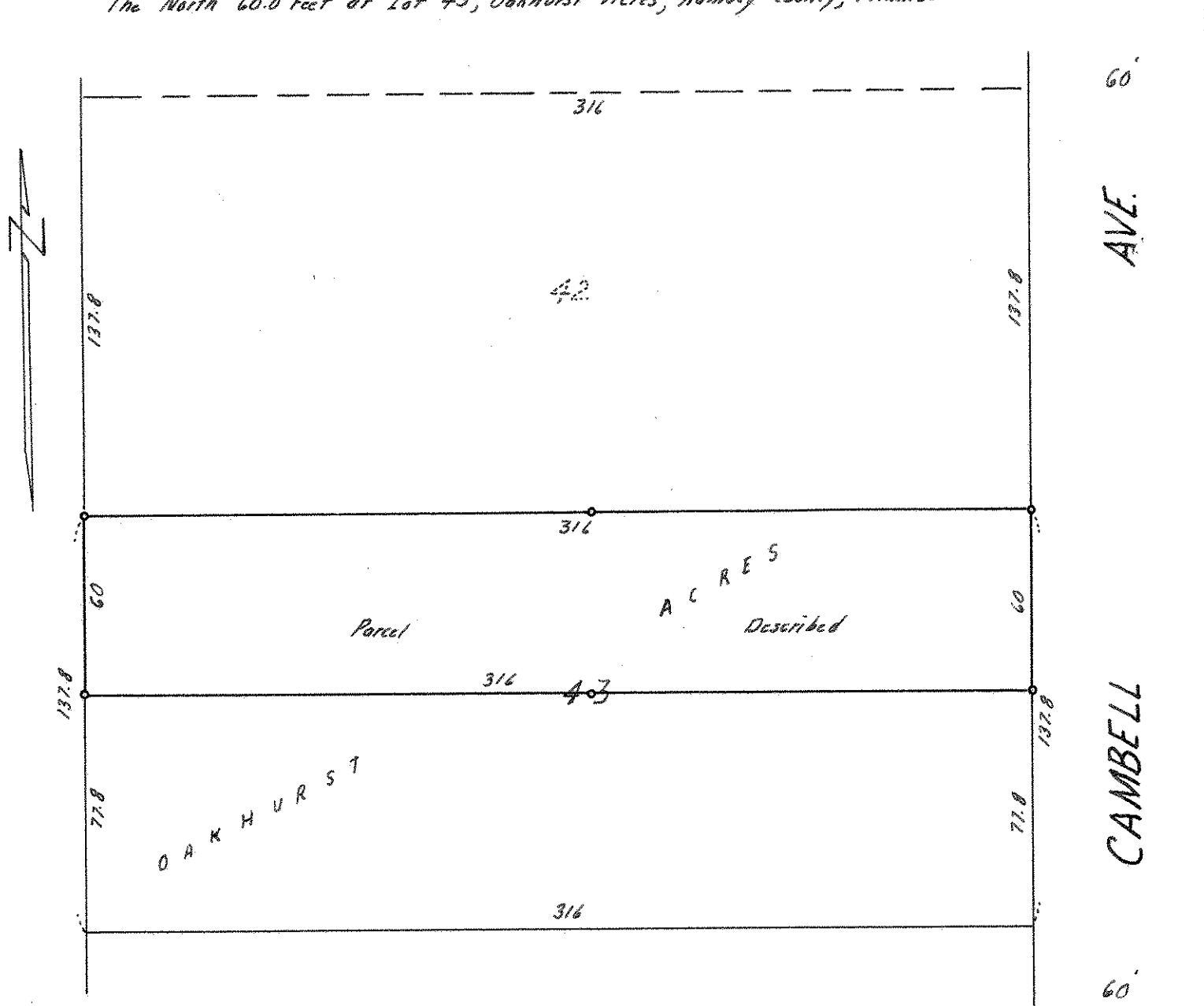
I Hereby Certify that this plat shows a survey made by me of the property described on this plat, and that the corners are correctly placed as shown, and that all locations have been correctly shown.

Surveyed For *R. J. Kieler (Mrs. James St. Jacques)*
 Date *September 1964*
 Scale *1" = 50'*

By _____
 REGISTERED LAND SURVEYOR

Description:

The North 60.0 feet of Lot 43, Oakhurst Acres, Ramsey County, Minnesota.



o Denotes Iron Monument