

FROM THE OFFICE OF

CHARLES O. GEORGI COMPANY

2215 West County Road B

Saint Paul 13, Minnesota

REGISTERED CIVIL ENGINEER AND LAND SURVEYOR



I Hereby Certify that this plat shows a survey made by me of the property described on this plat, and that the corners are correctly placed as shown, and that all locations have been correctly shown.

Surveyed For W^m C. Kelly

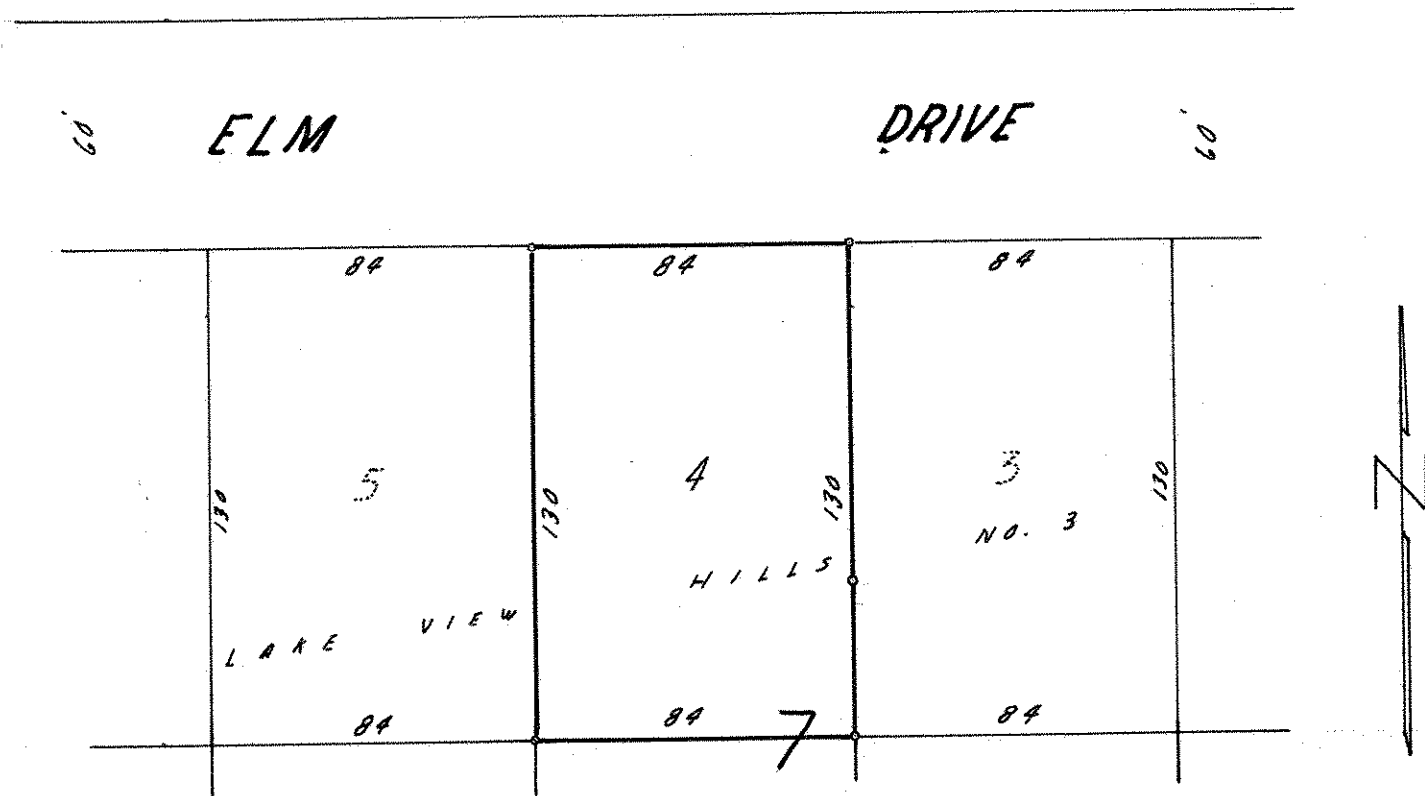
Date August 1965

Scale 1" = 50'

By Charles O. Georgi
REGISTERED LAND SURVEYOR

Description:

Lot 4
Block 7
Lake View Hills No. 3



o Denotes Iron Monument