

FROM THE OFFICE OF

**CHARLES O. GEORGI COMPANY**

2215 West County Road B

Saint Paul 13, Minnesota

REGISTERED CIVIL ENGINEER AND LAND SURVEYOR

**Certificate  
of Survey**

I Hereby Certify that this plat shows a survey made by me of the property described on this plat, and that the corners are correctly placed as shown, and that all locations have been correctly shown.

*T. Guggenius*

Surveyed For.....

Date..... *June 1962*

Scale..... *1" = 50'*

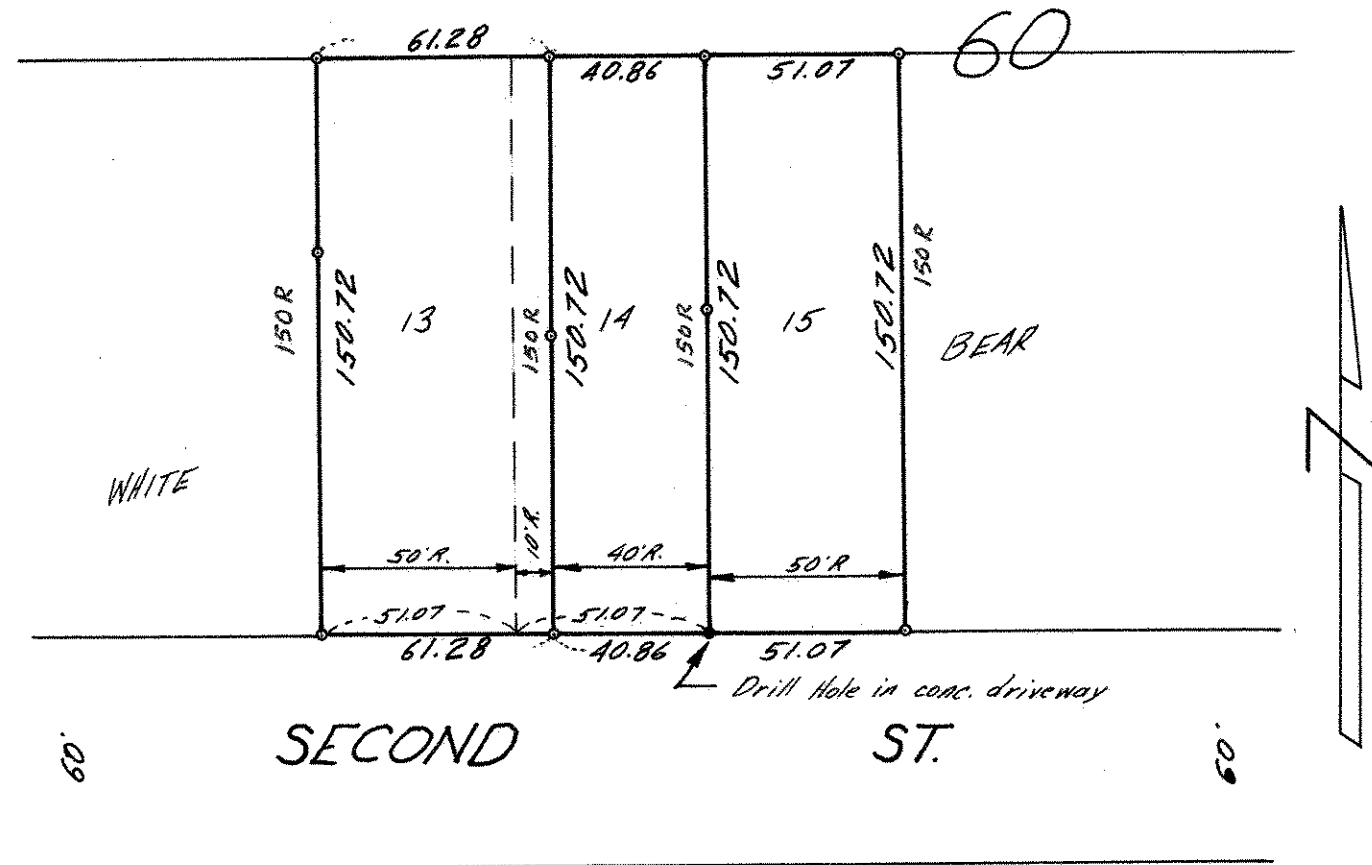
By *Charles O. Georgi*  
REGISTERED LAND SURVEYOR

Description:

*Block 60  
White Bear*

NOTE:

*Measurements shown, other than record plat distances, are prorated measurements which are in accord with line of occupancy and monuments found in this block.*



◦ Denotes Iron Monument  
R. Denotes Record Plat Distance