

FROM THE OFFICE OF

# CHARLES O. GEORGI COMPANY

2215 West County Road B

Saint Paul, Minnesota 55113

REGISTERED CIVIL ENGINEER AND LAND SURVEYOR



I Hereby Certify that this plat shows a survey made by me of the property described on this plat, and that the corners are correctly placed as shown, and that all locations have been correctly shown.

Surveyed For James J. Ritt

Date April 1973

Scale 1" = 40'

By Charles O. Georgi  
REGISTERED LAND SURVEYOR

**Description:**

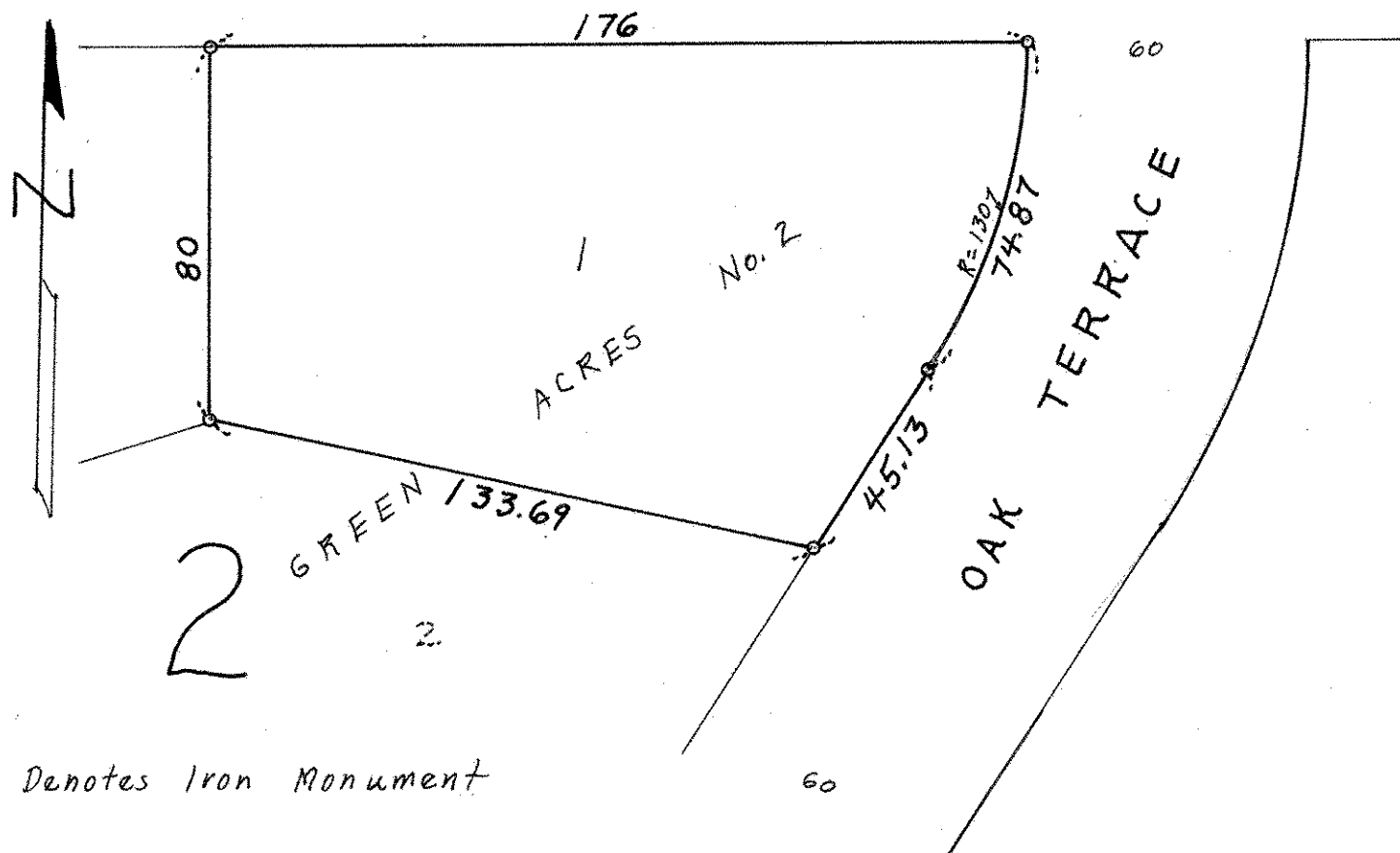
Lot 1, Block 2, Green Acres No. 2

Ramsey County, Minn.

66

CEDAR AVE.

66



o Denotes Iron Monument

60