

24, 30, 22

FROM THE OFFICE OF

CHARLES O. GEORGI COMPANY

2215 West County Road B

Saint Paul 13, Minnesota

REGISTERED CIVIL ENGINEER AND LAND SURVEYOR

Certificate of Survey

I Hereby Certify that this plat shows a survey made by me of the property described on this plat, and that the corners are correctly placed as shown, and that all locations have been correctly shown.

Surveyed For *Arthur Ritterhoff*

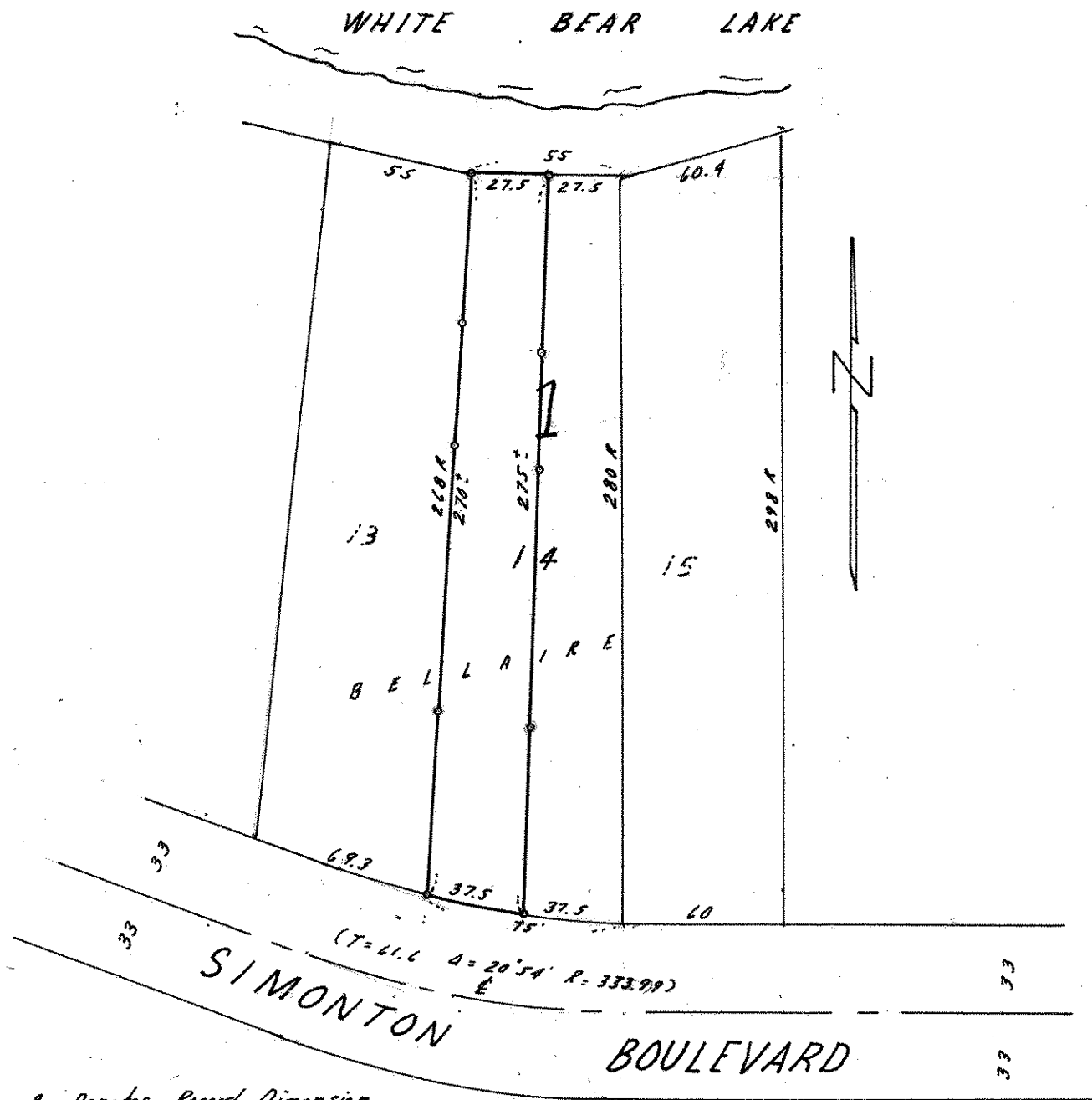
Date *August 1965*

Scale *1" = 60'*

By *Charles O. Georgi*
REGISTERED LAND SURVEYOR

Description:

The West 1/2 of Lot 14, Block 1, Belleaire



R Denotes Record Dimension
o Denotes Iron Monument